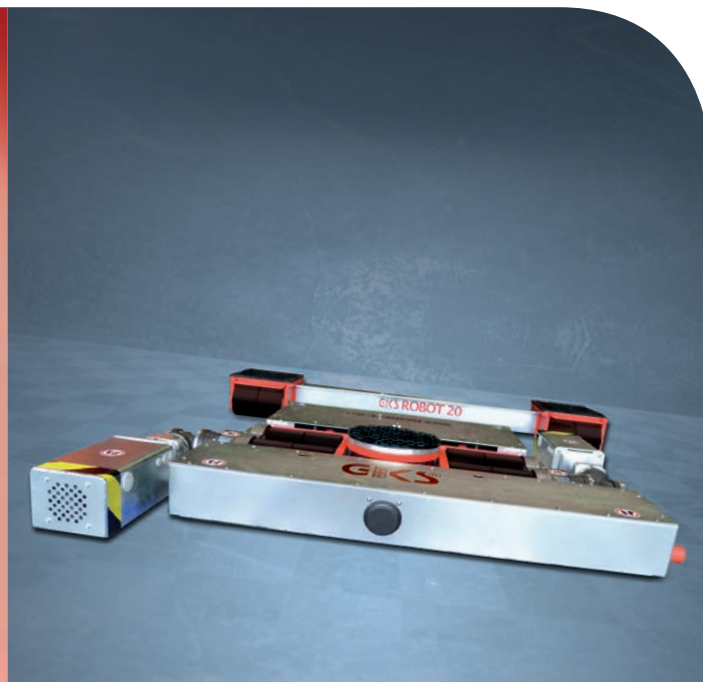




## Lifting and Moving Solutions



The Original – in Highest Quality. On the Market for more than 45 Years. Worldwide.

[www.gks-perfekt.com](http://www.gks-perfekt.com)

**EDITION 2015**



## Index

Products	Load Capacity	Page
<b>Hydraulic Toe Jacks V/V-EX/G/U</b>		<b>4 - 9</b>
Product description		5
Toe Jacks V5 + V10	5 - 10 t	6
Toe Jacks V15 + V20	15 - 20 t	7
Toe Jacks V5-EX + V30-EX + V5K-EX	5 - 30 t	8
G5 + G10 + Unilifter U6	5 - 10 t	9
<b>Hydraulic Hand Pump PV + Electric Pumps PE</b>		<b>10 - 13</b>
Product description		11
Pump PV		12
Pumps PE + PE2 + PE4		13
<b>Transport Trolleys F/L + Tandem Trolleys TL</b>		<b>14 - 21</b>
Product description		15
Transport Trolley F3/L3 + F6/L6	6 - 12 t	16
Transport Trolley F9/L9 + F12/L12 + F18/L18	18 - 36 t	17
Transport Trolley F20/L20 + F30/L30	40 - 60 t	18
Transport Trolley F40/L40 + F60/L60	80 - 120 t	19
Tandem-Trolley TL6 + TL12	6 - 12 t	20
Tandem-Trolley TL20 + TL40 + TL60	20 - 60 t	21
<b>Rotating Trolleys RL</b>		<b>22 - 25</b>
Product description		23
Rotating Trolley RL1 + RL2	1 - 2 t	24
Rotating Trolley RL4 + RL6	4 - 6 t	25
<b>Remotely Operated and Battery Operated Transport Systems ROBOT</b>		<b>26 - 29</b>
Product description		27
Transport System ROBOT 20 <b>NEW</b>	20 t	28
Transport System ROBOT 40	40 t	29
<b>Special Transport Trolleys + Clean Room Equipment + Wheels</b>		<b>30 - 33</b>
Swing Trolley F6-p/L6-p + Container Trolley F/TL <b>NEW</b>	12 - 40 t	30
Twinlifter TW28 <b>NEW</b>	2,8 t	31
Clean Room Equipment		32
Wheels <b>NEW</b>		33
<b>Standard products with minor modifications + Customised Solutions</b>		<b>34 - 35</b>

This catalog is in effect from Sep 1st, 2014. This catalog replaces all previous editions.



GKS-Perfekt ►► Safe lifting, effortless moving



### THE ORIGINAL

For over 45 years the name GKS-PERFEKT stands for a complete and fully complemented range of products for safe lifting and effortless moving of heavy loads. Worldwide our hydraulic toe jacks and transport trolleys are solving problems of various magnitudes where heavy loads have to be moved on company premises.



### GKS-PERFEKT / Products in Highest Quality

As an accredited company according to DIN EN ISO 9001:2008 standard our manufacturing process calls on state-of-the-art production methods thus enabling us to achieve a constantly high quality standard. Every single jack and trolley passes through a sequence of tests before it is delivered and comes with a test report and label indicating the date for its next inspection.



### GKS-PERFEKT / Customer Orientation and Expert Advice

You get a perfect GKS-PERFEKT solution for every different application. Very fast and professional. From our standard product range for heavy loads up to 120 tons or customized solutions up to 200 tons.



### GKS-PERFEKT / Warranty and Service

All our GKS-PERFEKT products come with a 5-year limited warranty (except GKS ROBOT on p. 26 ff. operating hours) according to our warranty conditions, if used as directed and described in our product manuals.



All our products are factory approved, come ready to use, and the toe jacks bear following test mark / CE mark: ANSI/ASME

For questions on how to use the equipment, maintenance reasons, delivery of spare parts or our quick repair service, just call our office. For further info, more technical details or latest news, just go to our website

[www.gks-perfekt.com](http://www.gks-perfekt.com).



**Hydraulic**

**Toe Jacks**

**V / V-EX / G / U**



# Hydraulic Toe Jacks

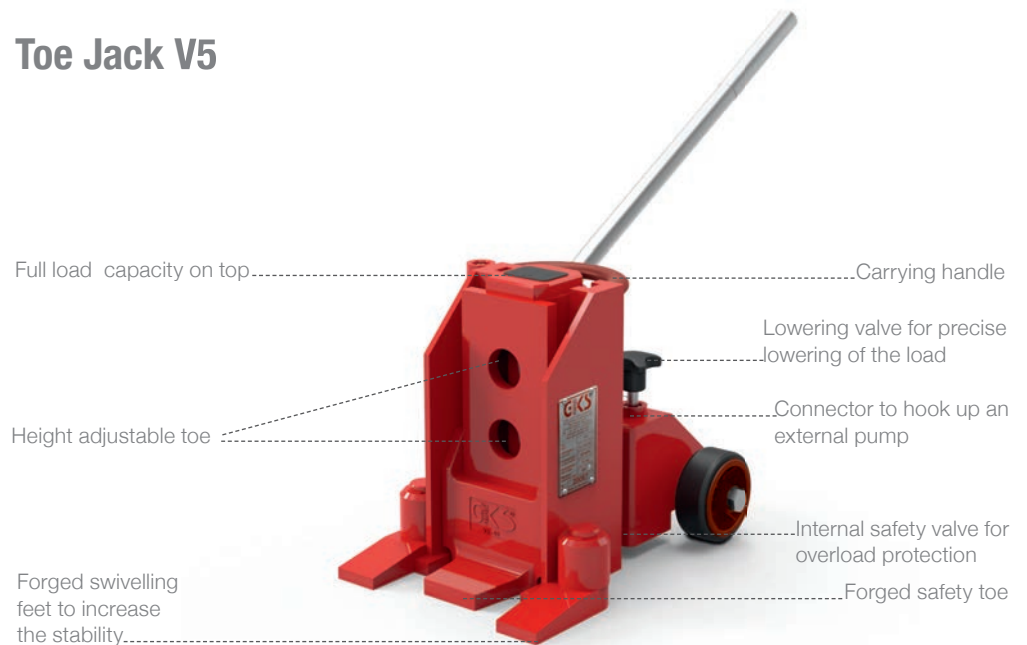
## V / V-EX / G / U

GKS-PERFEKT hydraulic toe jacks meet the highest quality standards. For decades our equipment has proven to be exceptionally robust and durable. Our jacks are 100% tested and approved before leaving the factory to assure proper functionality and appearance. The customer receives a ready to use, practical device for multi-purpose applications at any given site.

General GKS-PERFEKT Toe Jack features:

- High-grade material
- Precision guideways
- Our well-proven forged safety toe with high safety margin
- Testmark BGV D8 (D), ANSI/ASME (USA)
- Module design for easy repair/maintenance
- Lifetime technical support

### Toe Jack V5





**Toe Jacks V ▶▶ For heavy loads up to 10 tons**



- Forged safety toe, made of high-strength, hardened and tempered material
- Forging yields a very high safety margin
- A peg on the back secures correct insertion
- Using the hand pump PV with 2 jacks or electric pump PE with 4 jacks allows the doubling/ quadrupling of the load capacity (see details on page 10)



**V5**



**V10**

Technical data	V5	V10
Item number	10181	10182
Full load capacity	50 kN ( 5 t)	100 kN (10 t)
Working pressure	520 bar	520 bar
Minimum loading height using safety toe	15 mm	20 mm
Lifting height	140 mm	160 mm
Adjustable range of safety toe	3 x	4 x
Loading height using top plate	252 mm	310 mm
Overall dimensions (L x W x H)	285 x 235 x 252 mm	357 x 260 x 310 mm
Tare weight incl. oil fill	21 kg	32 kg



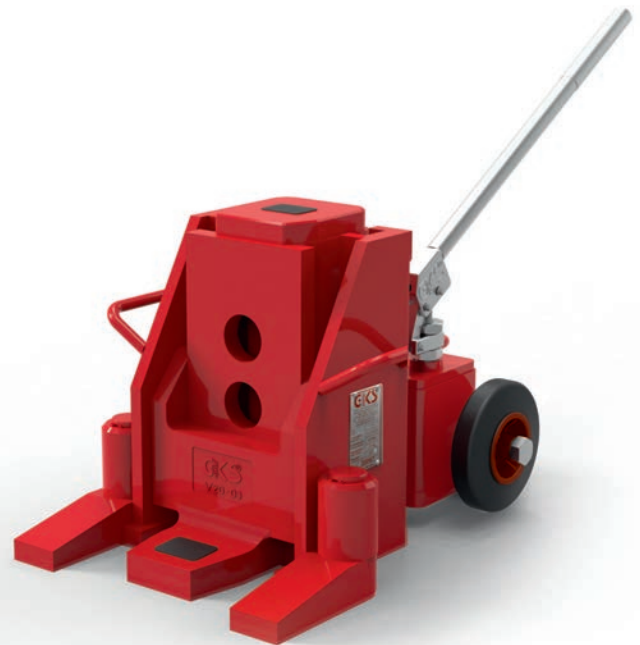
**Toe Jacks V ▶▶ For heavy loads up to 20 tons**



- Easy rolling of the toe jack by tilting back with lifting handle through upend enables a back-friendly transport



**V15**



**V20**

**Technical data**

	<b>V15</b>	<b>V20</b>
Item number	10183	10184
Full load capacity	150 kN (15 t)	200 kN (20 t)
Working pressure	520 bar	520 bar
Minimum loading height using safety toe	25 mm	30 mm
Lifting height	160 mm	160 mm
Adjustable range of safety toe	4x	3x
Loading height using top plate	318 mm	325 mm
Overall dimensions (L x W x H)	390 x 320 x 318 mm	425 x 326 x 325 mm
Tare weight incl. oil fill <sup>  </sup>	53 kg	72 kg





**Toe Jacks V-EX ▶▶ For heavy loads up to 30 tons**



- For loads difficult to access and where a distance for safety reasons is required
- Up to two hydraulic jacks can be operated with the hand pump PV or up to four jacks with the electric pump PE. More details on pumps on page 10 ff.
- V5K-EX: low-rise toe jack with fixed toe on both sides



**V5-EX**



**V30-EX**



**V5K-EX**

Technical data	V5-EX	V30-EX	V5K-EX
Item number	10185	11140	10187
Full load capacity	50 kN ( 5 t)	300 kN (30 t)	50 kN ( 5 t)
Working pressure	520 bar	430 bar	520 bar
Minimum loading height using safety toe	15 mm	40 mm	15 mm
Lifting height	140 mm	156 mm	105 mm
Max. Lifting height toe 1 / toe 2	-	-	120 / 200 mm
Adjustable range of safety toe	3x	2x	-
Loading height using top plate	252 mm	330 mm	190 mm
Overall dimensions (L x W x H)	227 x 212 x 252 mm	454 x 400 x 330 mm	210 x 215 x 190 mm
Tare weight in kg	17 kg	105 kg	12 kg

\* Recommended: to use with electric pump PE

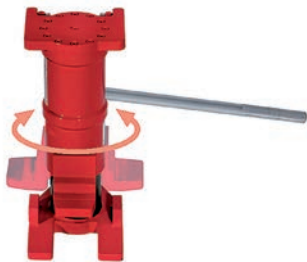




**Toe Jacks V-EX ▶▶ For heavy loads up to 10 tons**



- Forklift jack G: for maintenance purposes on fork lift trucks and other industrial vehicles
- Outstanding stability due to solid feet and extendet safety toe with grooves
- Unilifter U6: is an all-purpose toe jack for vertical/horizontal use



**G5**



**G10**



**U6**

Technical data	G5	G10	U6
Item number	10189	12378	13292
Full load capacity	50 kN ( 5 t)	100 kN (10 t)	60 kN (6 t)
Working pressure	520 bar	520 bar	720 bar
Minimum loading height using safety toe	30 mm	30 mm	18 mm
Lifting height	140 mm	140 mm	115 mm
Adjustable range of safety toe	3x	3x	-
Loading height using top plate	265 mm	318 mm	265 mm
Overall dimensions (L x W x H)	397 x 255 x 265 mm	461 x 280 x 318 mm	306 x 146 x 265 mm
Tare weight incl. oil fill	30 kg	57 kg	15 kg

# Hydraulic Hand Pump PV and Electric Pumps PE



# Hydraulic Hand Pump PV and Electric Pumps PE

The GKS-PERFEKT hydraulic hand and electric pumps allow the use of 2 or more toe jacks, when the lifting capacity needs to be doubled, the lifting on one side only is impossible or safety reasons require operation and monitoring from a certain distance.

## Hand pump PV



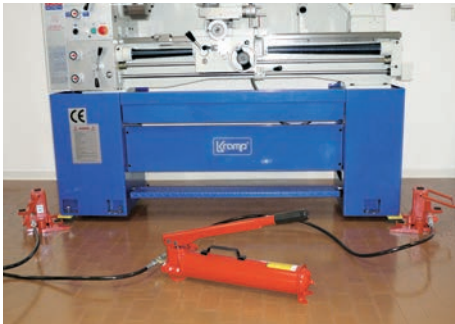
## Electric pump PE







## Hydraulic Hand Pump PV



- Standard configuration: with 2 x 6.6" (2m) hydraulic hoses with non-drip quick-release fastener
- Options: Gauges, shut-off valve, extended hydraulic hoses



PV

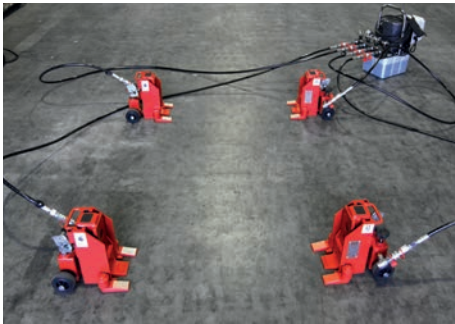
Technical data	PV
Item number	10198
Working pressure (voreingestellt)	520 bar
Flow rate stage 1	42 cm <sup>3</sup> / 30 bar
Flow rate stage 2	2,6 cm <sup>3</sup> / 520 bar
Tank capacity	2,25 l
Overall dimensions (L x W x H)	465 x 143 x 175 mm
Tare weight in kg with oil (without hoses)	12 kg
Hose 2m, quick-release fastener	2
Electric connection	-
For use with gks toe jacks	Je 2 x V5, V5-EX, V5K-EX, V10, V10-EX, V15, V20, 1 x V30-EX*

\*Working pressure 430 bar





## Electric Pumps PE



- Model PE: Standard version incl. gauge, 2/2 directional control valve for single-acting cylinders and 2 x 3 m hydr. hoses with non-drip quick release fasteners with female couplings on both sides for use with GKS toe jacks
- Model PE2: like PE, but with 2-way manifold incl. male couplings and 2 needle valves for sensitive lowering
- Model PE4: like PE2, but with 4-way manifold and 4 x 3 m hydraulic hoses
- Options: extended hydr. hoses (4 m or longer), bigger oil reservoir 9,5 l

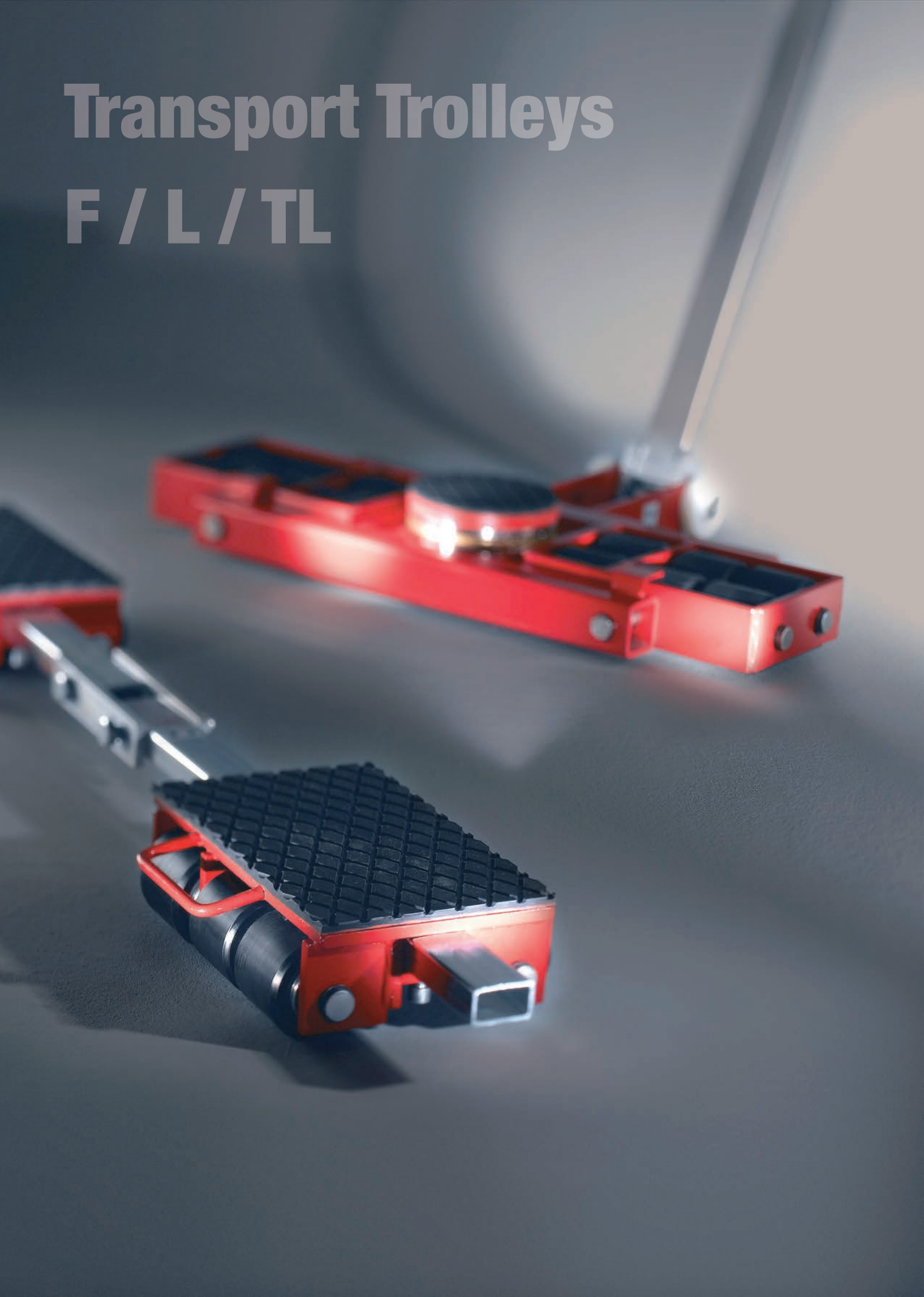


Technical data	PE	PE2	PE4
Item number	10199	13591	13592
Working pressure (voreingestellt)	520 bar	520 bar	520 bar
Flow rate stage 1	2,5 l	2,5 l	2,5 l
Flow rate stage 2	0,3 l / min	0,3 l / min	0,3 l / min
Tank capacity*	4,8 l	4,8 l	4,8 l
Overall dimensions (L x W x H)	450 x 310 x 495 mm	650 x 310 x 495 mm	650 x 310 x 495 mm
Tare weight in kg with oil (without hoses)	30 kg	35 kg	44 kg
Hose 3m, quick-release fastener	2	2	4
Electric connection	230 V / 50 Hz	230 V / 50 Hz	230 V / 50 Hz
For use with gks toe jacks	2xV5, V5-EX, V5K-EX, G5, V10, V10K, V10-EX, V15, V20, V30-EX		4x V5, V5-EX, V5K-EX, G5, V10, V10K, V10-EX, V15, V20, 2x V30-EX

\* The option „Bigger Oil Reservoir“ is mandatory to operate 4 GKS toe jacks V30-EX

# Transport Trolleys

F / L / TL



# Transport Trolleys

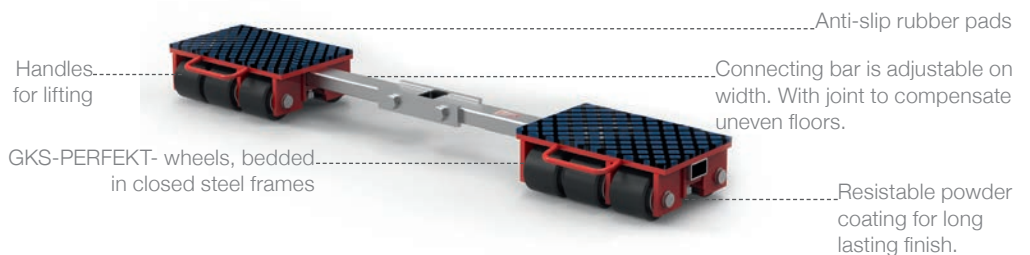
## F / L / TL

Our worldwide approved transport trolleys solving your in-house heavy load standards - safe and perfect! Series F and L – the perfect 3-point moving solution for safe and simple transport. F trolleys – the rear axle of the load moving system with adjustable connecting bar to fit under heavy loads of almost any width. L trolleys – the front steering support with swivel top and tow eye to guide your loads safely. Wheels - special GKS wheels, that do not mark floors. Low rolling resistance and highest stability for numerous uses.

### Steerable Trolley L 9



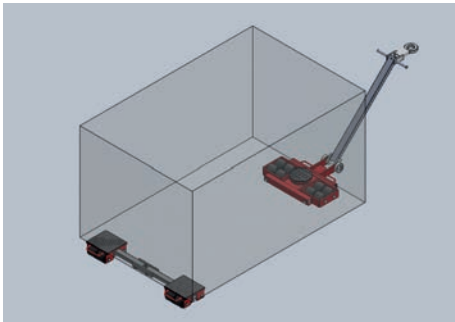
### Rear Trolley F 9



All trolleys are equipped with GKS-PERFEKT wheels with special lining material (details on p. 33)



**Transport Trolleys F / L ▶▶ For heavy loads up to 12 tons**



- Our standard transport trolleys F/L3 up to F/L18 for heavy loads from 6 t up to 36 t
- Extremely low loading height
- All transport trolleys from F/L 3 to F/L 18 are interchangeable due to identical loading height



**F3 / L3**



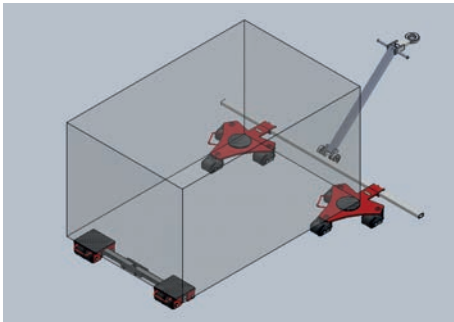
**F6 / L6**

Technical data	F3	L3	F6	L6
Item number	10206	10207	10208	10209
Loading height/no. of wheels (85 x 85 mm)	110 mm / 4	110 mm / 4	110 mm / 8	110 mm / 8
Contact surface per cassette	150 x 150 mm	-	200 x 220 mm	-
Connecting rod, adjustable	300 - 1000 mm	-	640 - 1030 mm	-
Swivel plate Ø 170 mm, steering angle	-	± 90°	-	± 90°
Steering rod	-	950 mm	-	1080 mm
Overall dimensions (L x W)	-	270 x 230 mm	-	610 x 520 mm
Tare weight in kg	15 kg	12 kg	30 kg	41 kg
Load capacity	30 kN (3 t)	30 kN (3 t)	60 kN (6 t)	60 kN (6 t)
Total load capacity	60 kN (6 t)		120 kN (12 t)	





**Transport Trolleys F / L ▶▶ For heavy loads up to 36 tons**



- Can be combined with Tandem trolleys TL6 / TL12 or rotating trolleys RL2 / RL4 / RL6



**F9 / L9**

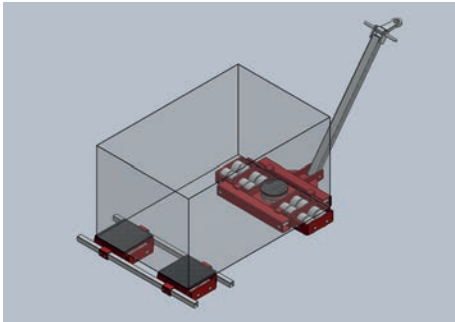


**F12 / L12  
F18/L18 (w/o pic)**

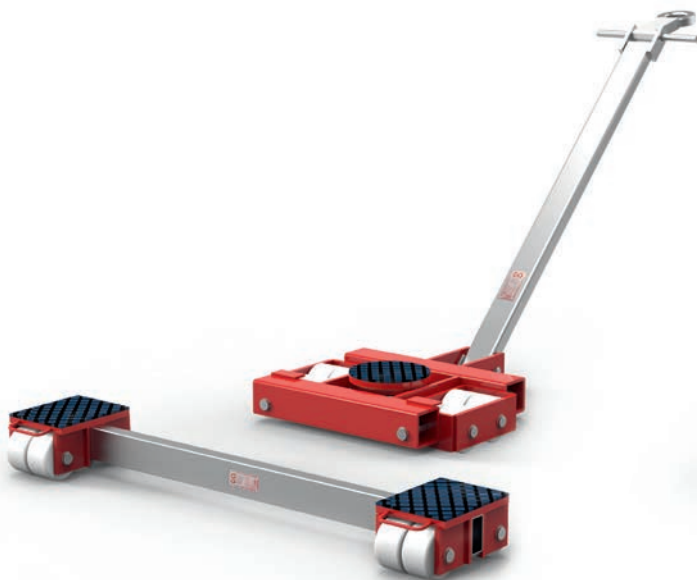
Technical data	F9	L9	F12	L12	F18	L18
Item number	11070	11071	10312	10313	10215	10216
Loading height/no. of wheels (85 x 85 mm)	110 mm / 12	110 mm / 12	110 mm / 16	110 mm / 16	110 mm / 16	110 mm / 16
Contact surface per cassette	320 x 200 mm	-	200 x 407 mm	-	200 x 407 mm	-
Connecting rod, adjustable	840 - 1230 mm	-	1014 - 1430 mm	-	1014 - 1430 mm	-
Drehteller Ø170 mm, Lenkwinkel	-	± 90°	-	± 90°	-	± 90°
Steering rod	-	1080 mm	-	1080 mm	-	1080 mm
Overall dimensions (L x W)	-	840 x 583 mm	-	1030 x 620 mm	-	1030 x 620 mm
Tare weight in kg	43 kg	59 kg	52 kg	80 kg	55 kg	82 kg
Load capacity	90 kN (9 t)	90 kN (9 t)	120 kN (12 t)	120 kN (12 t)	180 kN (18 t)	180 kN (18 t)
Total load capacity	180 kN (18 t)		240 kN (24 t)		360 kN (36 t)	



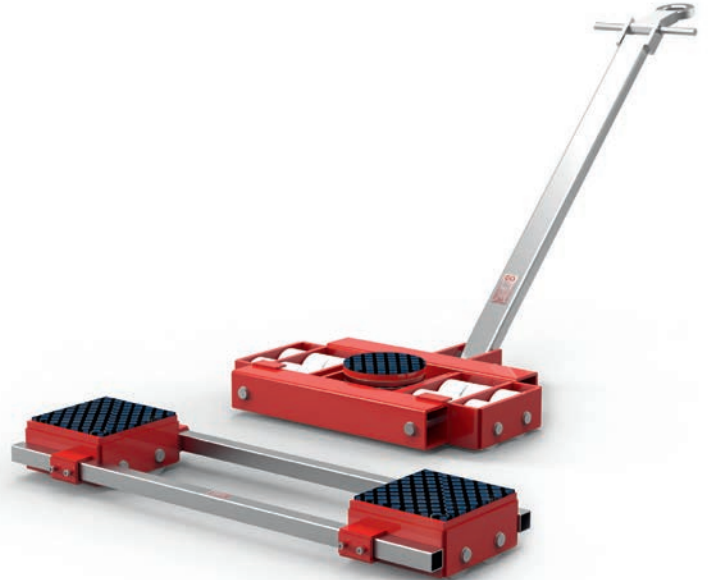
**Transport Trolleys F / L ▶▶ For heavy loads up to 60 t**



- Heavy duty transport trolleys F/L 20 to F/L 60 for loads from 40 t to 120 t
- Extremely low loading height: 180 mm
- All transport trolleys from F/L 20 to F/L 60 are interchangeable due to identical loading height
- For increased stability, models F30 and bigger are equipped with two connecting rods.



**F20 / L20**

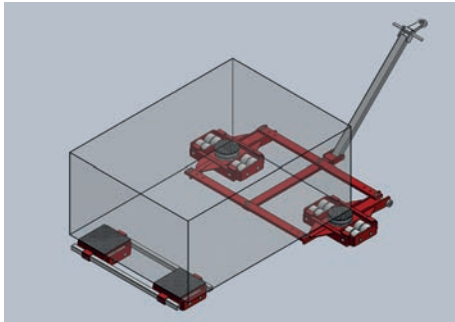


**F30 / L30**

Technical data	F20	L20	F30	L30
Item number	11060	11061	11992	11993
Loading height/no. of wheels (140 x 85 mm)	180 mm / 8	180 mm / 8	180 mm / 12	180 mm / 12
Contact surface per cassette	280 x 220 mm	-	288 x 300 mm	-
Connecting rod, adjustable	440 - 1600 mm	-	650 - 1830 mm	-
Swivel plate Ø 250 mm, steering angle	-	± 90°	-	± 90°
Steering rod	-	1620 mm	-	1620 mm
Overall dimensions (L x W)	-	747 x 800 mm	-	820 x 952 mm
Tare weight in kg	81 kg	170 kg	128 kg	214 kg
Load capacity	200 kN (20 t)	200 kN (20 t)	300 kN (30 t)	300 kN (30 t)
Total load capacity		400 kN (40 t)		600 kN (60 t)



**Transport Trolleys F / L ▶▶ For heavy loads up to 120 t**



- Can be combined with Tandem trolleys TL20 / TL40 / TL 60, when 4-point-support is needed



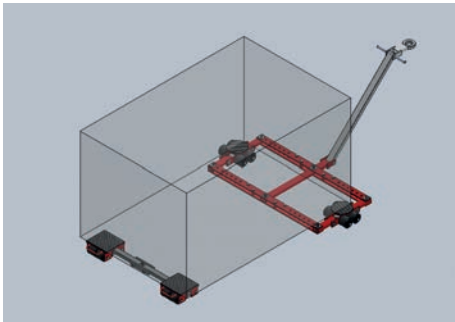
**F40 / L40**

**F60 / L60**

Technical data	F40	L40	F60	L60
Item number	11770	11771	10226	10227
Loading height/no. of wheels (140 x 85 mm)	180 mm / 16	180 mm / 16	180 mm / 24	180 mm / 24
Contact surface per cassette	370 x 370 mm	-	390 x 440 mm	-
Connecting rod, adjustable	740 - 1820 mm	-	1100 - 2730 mm	-
Swivel plate Ø 250 mm, steering angle	-	± 90°	-	± 90°
Steering rod	-	1620 mm	-	1620 mm
Overall dimensions (L x W)	-	1204 x 855 mm	-	835 x 1690 mm
Tare weight in kg	210 kg	264 kg	290 kg	435 kg
Load capacity	400 kN (40 t)	400 kN (40 t)	600 kN (60 t)	600 kN (60 t)
Total load capacity	800 kN (80 t)		1200 kN (120 t)	



**Tandem-Trolleys TL ▶▶ For heavy loads up to 12 t**



- Ideally suited for loads, when 4-point support is needed (e. g. frame structures)
- Tandem trolleys act as the front support and are used in combination with F or RL trolleys, which act as the rear support
- Our Tandem trolleys consist of two L trolleys, which can be used separately



**TL6**



**TL12**

Technical data	TL6	TL12
Item number	10229	10230
Loading height/no. of wheels (85 x 85 mm)	110 mm / 8	110 mm / 16
2 Swivel plate Ø 170 mm, steering angle	± 50°	± 40°
Overall dimensions (L x W)	1420 x 760 mm	1610 x 705 mm
Adjustable in 7 steps / 3 steps from*	500 - 1150 mm	660 - 1000 mm
Steering rod with eye for pulling**	960 mm	1080 mm
Tare weight in kg	54 kg	105 kg
Load capacity	60 kN (6 t)	120 kN (12 t)

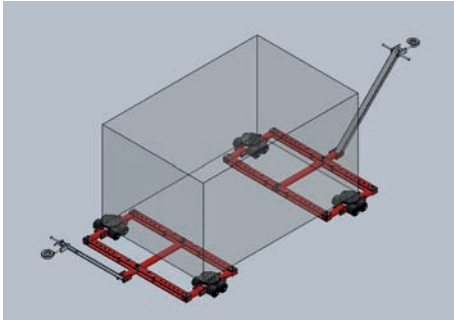
\* a greater track width is available upon request

\*\*a second handle bar is part of the delivery specification for use as a single trolley L3/L6





**Tandem-Trolleys TL ▶▶ For heavy loads up to 60 t**



- A small turning radius is realized by using a Tandem dolly in the front and rear



**TL20**



**TL60**

Technical data	TL20	TL40	TL60
Item number	11803	11148	12035
Loading height/no. of wheels (140 x 85 mm)	180 mm / 8	180 mm / 16	197 mm / 24
2 Swivel plate Ø 250 mm, TL 20 = Ø 170 mm, steering angle	± 45°	± 45°	± 40°
Overall dimensions (L x W)	2135 x 1180 mm	2220 x 1180 mm	3150 x 1815 mm
Adjustable in 3 steps / 3 steps / 3 steps from*	1260 - 1600 mm	1260 - 1600 mm	1175 mm
Steering rod with eye for pulling**	1620 mm	1620 mm	1620 mm
Tare weight in kg	222 kg	260 kg	570 kg
Load capacity	200 kN (20 t)	400 kN (40 t)	600 kN (60 t)

\* a greater track width is available upon request

\*\* a second handle bar is part of the delivery specification for use as a single trolley L3/L6

# Rotating Trolleys

RL

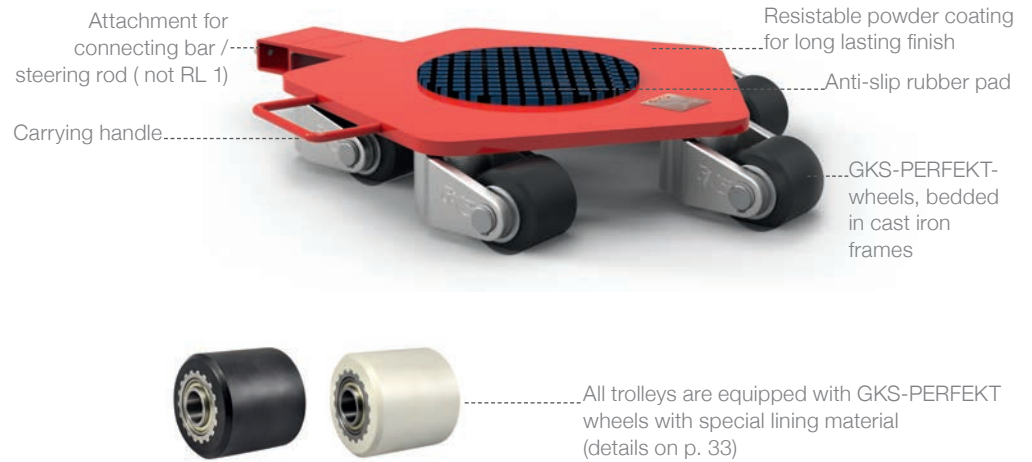


# Rotating Trolleys

## RL

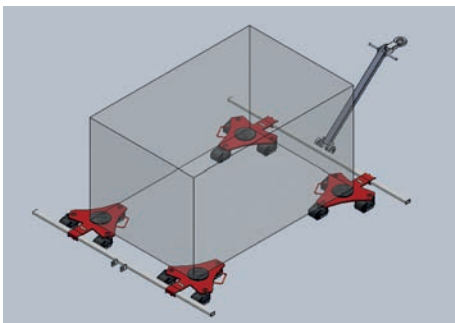
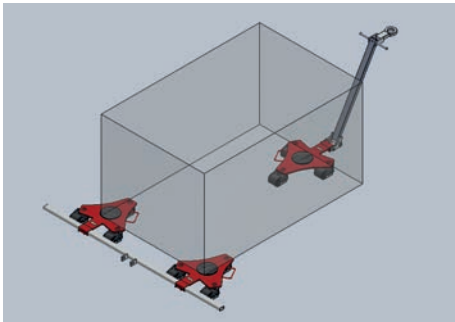
GKS-PERFEKT rotating trolleys are available for loads from 1 t to 6 t. The special bearings in our rotating trolleys allow easy moving and rotating 360° around its own axis. Use a set of 3 or 4 rotating trolleys or even more simultaneously, depending on the machine's support points, load distribution and floor conditions. Depending on the situation a combination of rotating trolleys with L / F / TL trolleys is possible.

### Rotating Trolley RL4





**Rotating Trolleys RL ▶▶ For heavy loads up to 2 t**



- RL trolleys with the same loading height can be combined for 3 or 4-point support
- Options: connecting bar and steering rod
- RL trolleys can be equipped with GKS-ALPERFEKT@PUR wheels for sensitive floors
- Depending on the load distribution, it's possible to combine different RL models, but with the same loading height



**RL1**



**RL2**

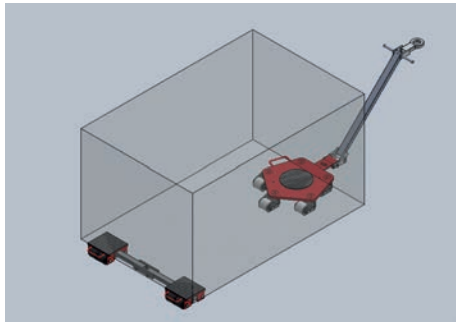
**Technical data**

	<b>RL1</b>	<b>RL2</b>
Item number	11456	10238
Number of wheels/dimensions	3 à 75 x 66 mm	3 à 85 x 85 mm
Loading height	100 mm	110 mm
Size of rubber pad Ø	170 mm	170 mm
Overall dimensions (L x W x H)	376 x 379 x 100 mm	685 x 515 x 110 mm
Tare weight in kg	15 kg	30 kg
Load capacity	10 kN (1 t)	20 kN (2 t)





**Rotating Trolleys RL ▶▶ For heavy loads up to 6 t**



- Rotating trolleys can be combined with F or Tandem TL trolleys with same loading height



**RL4**



**RL6**

Technical data	RL4	RL6
Item number	10240	13439
Number of wheels/dimensions	5 à 85 x 85 mm	5 à 85 x 85 mm
Loading height	110 mm	118 mm
Size of rubber pad Ø	250 mm	250 mm
Overall dimensions (L x W x H)	760 x 560 x 110 mm	760 x 560 x 118 mm
Tare weight in kg	50 kg	60 kg
Load capacity	40 kN (4 t)	60 kN (6 t)

# Remotely Operated and Battery Operated Transport Systems ROBOT 20 / 40

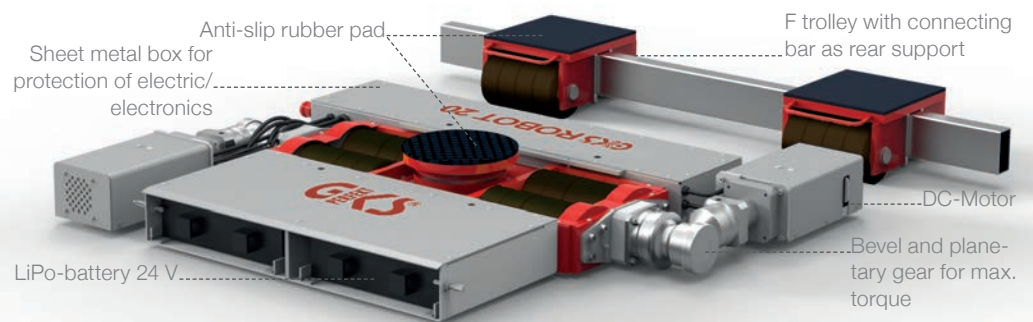


ROBOT Video

# Remotely Operated and Battery Operated Transport Systems ROBOT 20 / 40

The remotely operated transport systems ROBOT 40 and ROBOT 20 are used for internal logistics or in an assembly line. Loads up to 40 t can be moved autonomously. Depending on the individual situation, the batteries will run up to 90 min. The ROBOT allows simultaneous driving and steering. It's ready-to-use delivered and independent from any external energy sources. The well proven 3-point support, consisting of the L-ROBOT in front and the F trolley as a rear support, allows easy and secure driving.

## Transport System ROBOT 20



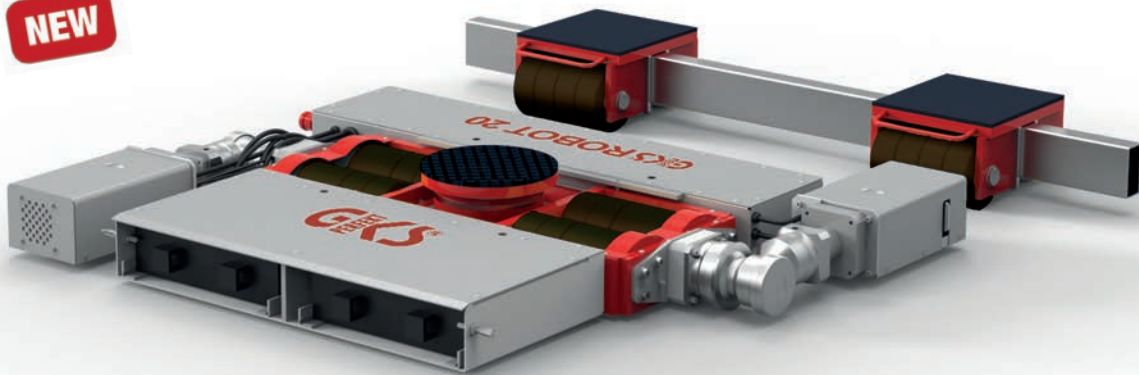


**Transport System ROBOT 20 ▶▶ For heavy loads up to 20 t**



- Depending on the load and starting-up/stopping procedures the batteries allow an operating time of 90 min. of max.
- Use of Li-Po-batteries (easy to recycle) for safety reasons
- Easy battery replacement through plug-in system, even under load
- Scope of delivery includes 2 standard chargers (12 h recharging time)

**NEW**



**Transport System ROBOT 20**

Technical data	L-ROBOT 10	F-ROBOT 10
Item number	14080	14081
Drive	DC Motor (24 V / 1000 W)	-
Battery Type	Li-Polymer	-
Operating time*	60 - 90 min	-
Reversing signal	Ja	-
Incline max. **	3 %	-
Loading height/no. of wheels	180 mm / 4 + 8 (105/53 mm wide)	180 mm / 18 (53 mm wide)
Dimensions (L x W x H)	1132 x 1326 x 180 mm	-
Contact surface	Ø 250	275 x 266 mm
Connecting rod, adjustable	-	532-1600 mm
Total weight in kg	255 kg	115 kg
Load capacity	100 kN (10t)	100 kN (10t)
Max. load capacity	200 kN (20 t)	

\* depending on the starting-up/stopping procedures

\*\* use a locking device to prevent inadvertent rolling at gradients

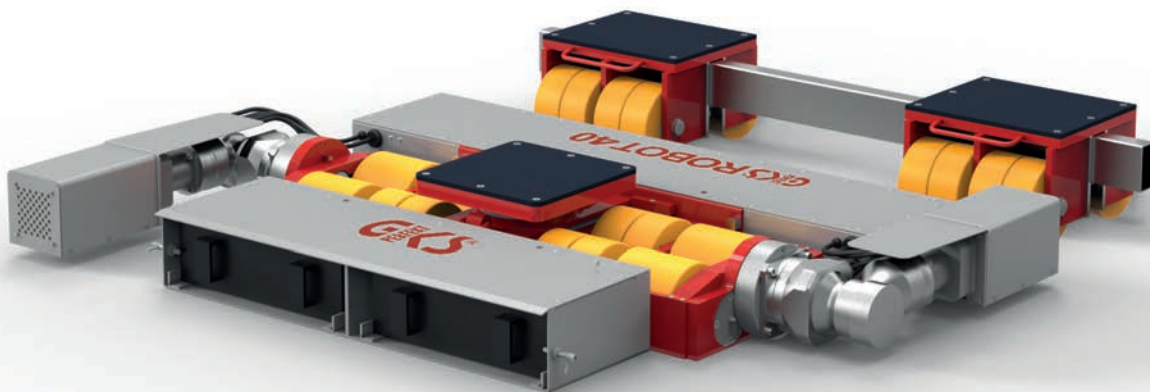




**Transport System ROBOT 40 ▶▶ For heavy loads up to 40 t**



- Remote control: Simultaneous forward/backward pushing of the controller moves the ROBOT forward/backward. Proportional speed control. Turning of the L-ROBOT on the spot under the load is possible
- Options: Quick charger (4 h), charging station for wall mounting, transport box, set of spare batteries, toe jack V15 with extended stroke



**Transport System ROBOT 40**

Technical data	L-ROBOT 20	F-ROBOT 20
Item number	14007	13636
Drive	DC Motor (24 V / 1,5 kW)	-
Battery Type	Li-Polymer	-
Operating time*	60 - 90 min	-
Reversing signal	Ja	-
Incline max. **	3 %	-
Loading height/no. of wheels	250 mm / 4 + 8 (154 + 76 mm wide)	250 mm / 16 (76 mm wide)
Dimensions (L x W x H)	1156 x 1748 x 250 mm	-
Contact surface	320 x 320 mm	310 x 379 mm
Connecting rod, adjustable	-	758 - 1600 mm
Total weight in kg	460 kg	140 kg
Load capacity	200 kN (20 t)	200 kN (20 t)
Max. load capacity	400 kN (40 t)	

\* depending on the starting-up/stopping procedures

\*\* use a locking device to prevent inadvertent rolling at gradients



Special Transport Trolleys ▶ ▶ For heavy loads up to 40 t

## GKS-PERFEKT Swing Trolley Set F6-p/L6-p

- Suitable for uneven floors. Up to 12 t load capacity
- Wheels are bedded in a rocker, that allows a swinging of  $\pm 10^\circ$
- Other load capacities upon request

## Container Trolley Set with Twistlock System

- Tandem trolley set with 4-point support for quick and secure connecting of trolleys with ISO-Containers
- For load capacities up to 12 t, 24 t or 40 t



F6-p/L6-p

Container Trolley Set F12-c/TL12-c

Technical data	F6-p	L6-p	F6-c	TL6-c	F12-c	TL12-c	F20-c	TL20-c
Item number	13041	13046	13642	13643	14130	14129	13293	13294
Load capacity	60 kN (6 t)	60 kN (6 t)	60 kN (6 t)	60 kN (6 t)	120 kN (12 t)	120 kN (12 t)	200 kN (20 t)	200 kN (20 t)
Loading height	110 mm	110 mm	176 mm	176 mm	176 mm	176 mm	225 mm	225 mm
No. of Wheels (Dim.)	8 (85 x 85 mm)	8 (85 x 85 mm)	8 (85 x 85 mm)	8 (85 x 85 mm)	16 (85 x 85 mm)	16 (85 x 85 mm)	8 (140 x 85 mm)	8 (140 x 85 mm)
Contact surface	235 x 272 mm	Ø 170 mm	-	-	-	-	-	-
Overall dimensions (L x W)	-	576 x 765 mm	-	*x 2259 mm	-	*x 2259 mm	-	*x 2259 mm
Weaving	$\pm 10^\circ$	$\pm 10^\circ$	-	-	-	-	-	-
Tare weight ca.	33 kg	45 kg	50 kg	75 kg	61 kg	155 kg	140 kg	280 kg
Total load capacity	120 kN ( 12 t)		120 kN ( 12 t)		240 kN ( 24 t)		400 kN ( 40 t)	

Technical specifications are subject to change

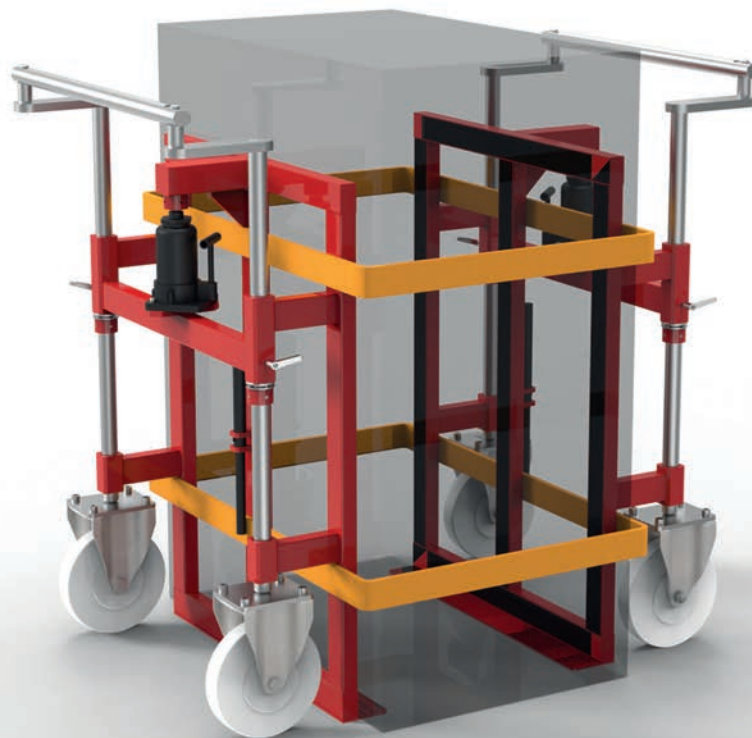
\*Length and width acc. to container dimensions (10 ft, 20 ft, 40 ft,...)



Special Transport Trolleys ▶ ▶ For heavy loads up to 2,8 t

## GKS-PERFEKT Twinlifter TW28

- Ideally suited for the transport of bulky and heavy loads such as tool cabinets, control cabinets, safes, crates, machinery, boilers etc.
- Sturdy welded design, 2 hydraulic lifting units with hand pump and drain valve, tandem steering of wheels via handle, standard polyurethane wheels, polyamide wheels optionally.



**NEW**

TW28

### Technical data

### Twinlifter TW28

Item number	11082 (PA-Wheels), 13687 (PU-wheels)
Load capacity per pair	28 kN (2,8 t)
Lifting height max.	177 mm
Max. Overall Height	1000 mm
Width	650 mm
Loading Height	5 mm
Min. Wheel Diameter	200 mm
Length of Lashing Strap incl. Tension Ratchet	8000 mm
Tare weight ca.	60 kg

Technical specifications are subject to change. Included in the delivery: 2 lashing straps incl. tension ratchet



Cleanroom Equipment ▶▶ For various heavy loads

## GKS-PERFEKT Cleanroom Equipment

- This nickel-plated product line is designed for the requirements inside clean rooms (e. g. chip production, food, pharma or chemical industry)
- Transport trolleys F, L and RL are equipped with our GKS-ALPERFEKT® PREMIUM wheels
- The technical data is identical with our standard equipment







## GKS-PERFEKT Wheels

**NEW**



**GKS-ALPERFEKT® and  
GKS-ALPERFEKT® PREMIUM**

Our standard wheels for trolleys with 110 mm loading height. Thousandfold approved, with a specific aluminum core with a shifted toothing to increase the life, 4 ball bearings and special polyamide lining for all-purpose application.

**NEW**



**GKS-ALPERFEKT® PREMIUM G**

Our standard wheels for trolleys with 180 mm loading height, when highest load bearing capacity is required. With special aluminium alloy core, ball bearings and special polyamide lining for all-purpose application.



**GKS-ALPERFEKT® PUR**

Our recommended special wheel with steel core and PU lining for sensitive floors.



**GKS-ALPERFEKT® STEEL**

Our recommended steel wheel for exterior surface (e.g. asphalt etc.) or heavily contaminated floors.

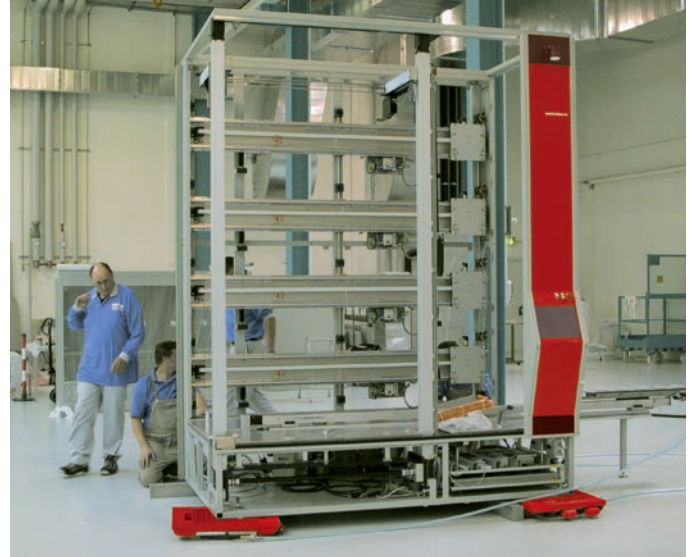
	<b>GKS-ALPERFEKT® PREMIUM 85 x 85 black</b>	<b>GKS-ALPERFEKT® PREMIUM 85 x 85 white</b>	<b>GKS-ALPERFEKT® PUR 85 x 85 / 140 x 85 grey</b>	<b>GKS-ALPERFEKT® PREMIUM G 140 x 85 white</b>	<b>GKS-ALPERFEKT® STEEL 85 X 85 / 140 X 85 silver</b>
Item number	10015	10018	11769 / 12007	10022	10016 / 10258
Clean, even flooring	•	•		•	
Impure flooring	•	•		•	•
Flooring with tiny steps	•	•		•	•
Heavily contaminated flooring					•
Sensitive flooring			•		



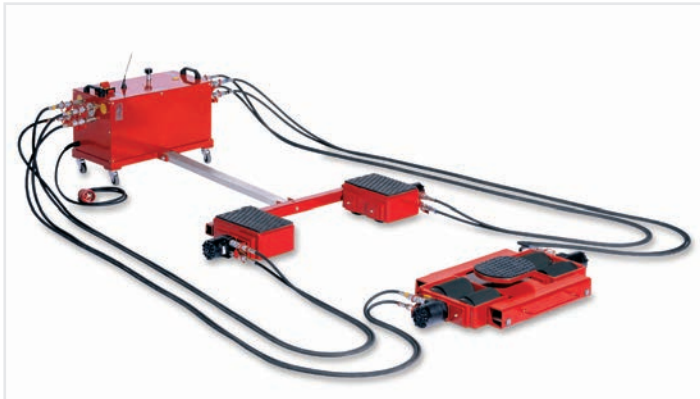
Standard products with minor modifications ►► For various heavy loads



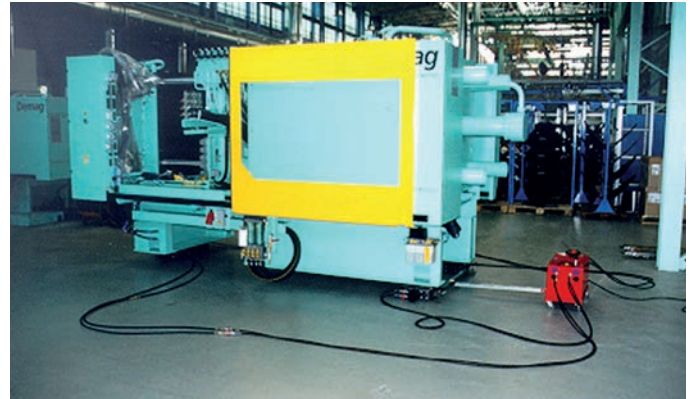
1



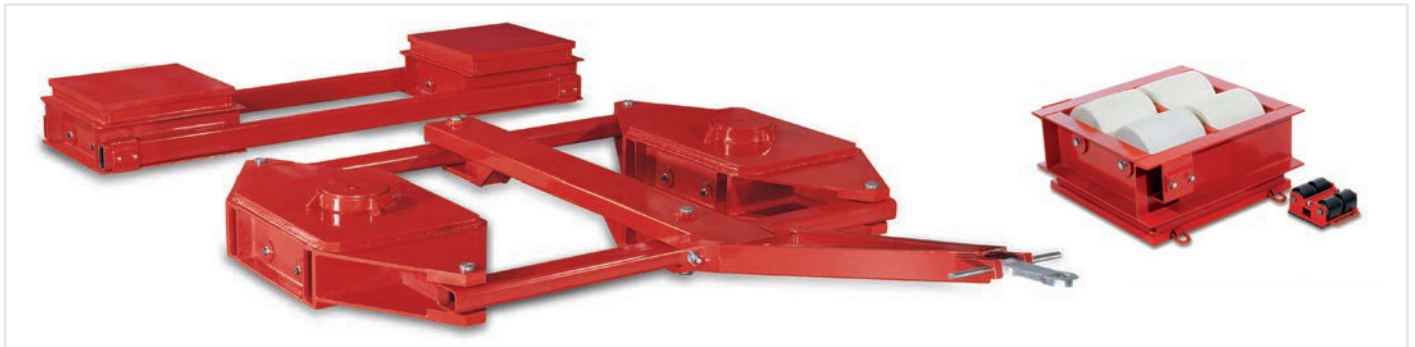
2



3



4



5

1. Trolley set HF/HL25 up to 50 t load capacity with hydraulic wheel compensation
2. Rotating trolley RAS with integrated air cushions
3. Hydraulic remotely operated transport set PTS
4. PTS in use
5. Heavy duty trolley set F/TL100 for a load capacity of 200 t max.





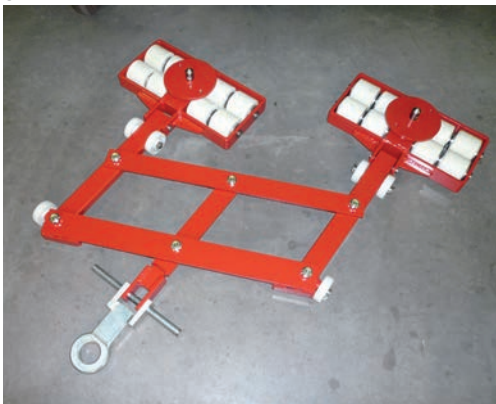
Customised Solutions ▶▶ For various heavy loads



6



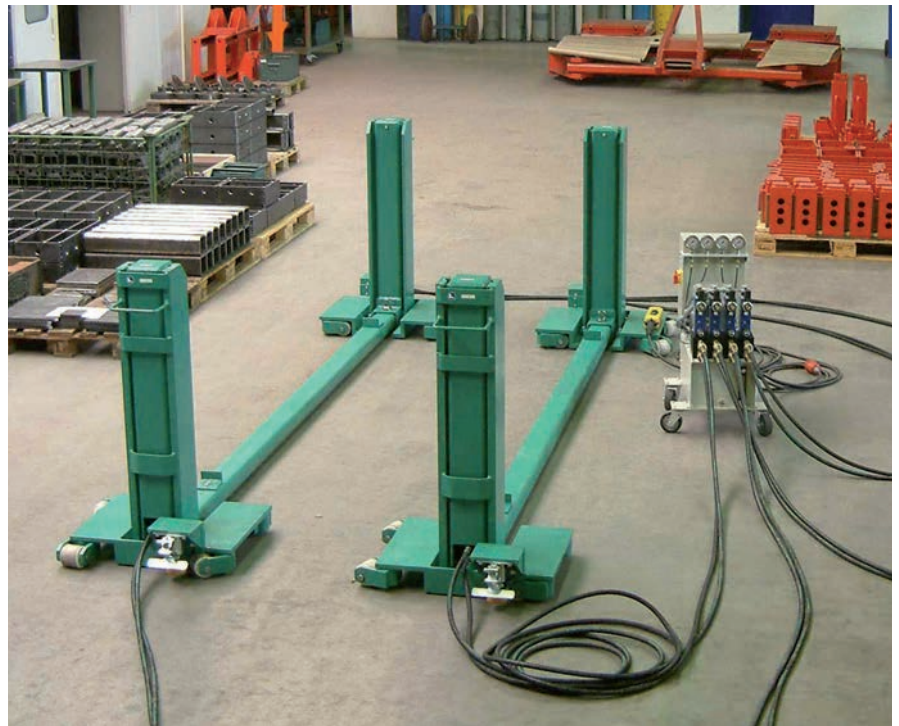
7



8



9



10

- 6. Toe jack with long stroke and 2 t capacity
- 7. Special remotely operated PTS system
- 8. Special Tandem trolley TL12 for 12 t max. capacity
- 9. F6 trolley with brakes
- 10. Synchronous lifting system with long stroke, fixed on rotating trolleys with brake



## **GKS-PERFEKT Lifting and Moving Solutions**

Georg Kramp GmbH & Co. KG

Max-Planck-Straße 32 • 70736 Fellbach / Germany • Telefon + 49 (0)711-510981-0 • Fax + 49 (0)711-510981-90

Email [info@gks-perfekt.com](mailto:info@gks-perfekt.com) • Website [www.gks-perfekt.com](http://www.gks-perfekt.com) • [www.kramp-werkzeuge.de](http://www.kramp-werkzeuge.de)