

QUASER

we cut faster

MV2 SERIES

CONTENTS

03-04 *MV2 SERIES*

05-08 *Unique spindle technology*

09-10 *ATC system*

11-12 *Coolant system & chip
management*

13-14 *Easy operation*

15-16 *MV204 & MV214 technical data*

17-18 *MV234 technical data*

19-20 *MV205 & MV215 & MV235
technical data*

21-24 *Layout*

25-26 *We build machines in a hybrid
way*

MV2 SERIES:

MV204 / MV205

MV214 / MV215

MV234 / MV235



Note: The object might be different from the photos of catalogue if there is any specification update.



MV2 SERIES

Travel X / Y / Z

MV204 & MV205:
1,270 / 700 / 610 (mm)

Table size

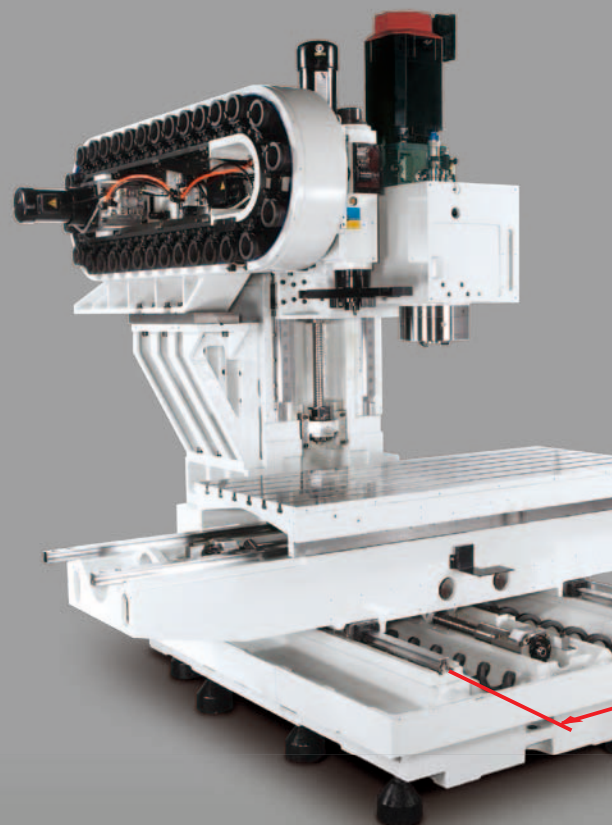
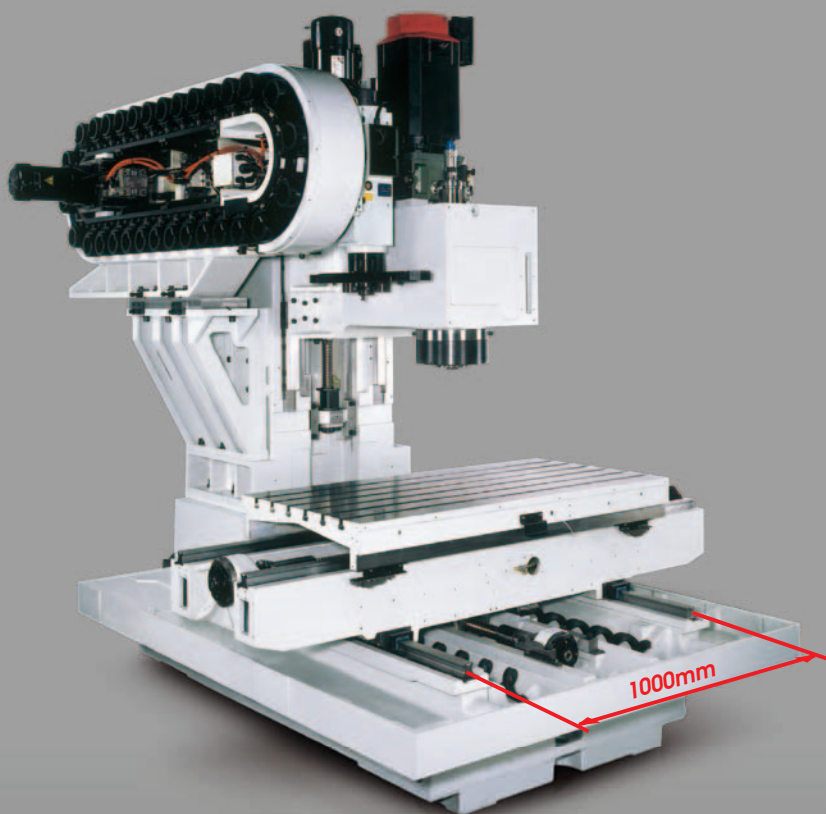
MV204 & MV205:
1,400 x 700 (mm)

Travel X / Y / Z

MV214 & MV215:
1,524 / 700 / 610 (mm)

Table size

MV214 & MV215:
1,700 x 700 (mm)



MV204 & MV205

MV214 & MV215



Travel X / Y / Z

MV234:

2,040 / 762 / 661 (mm)

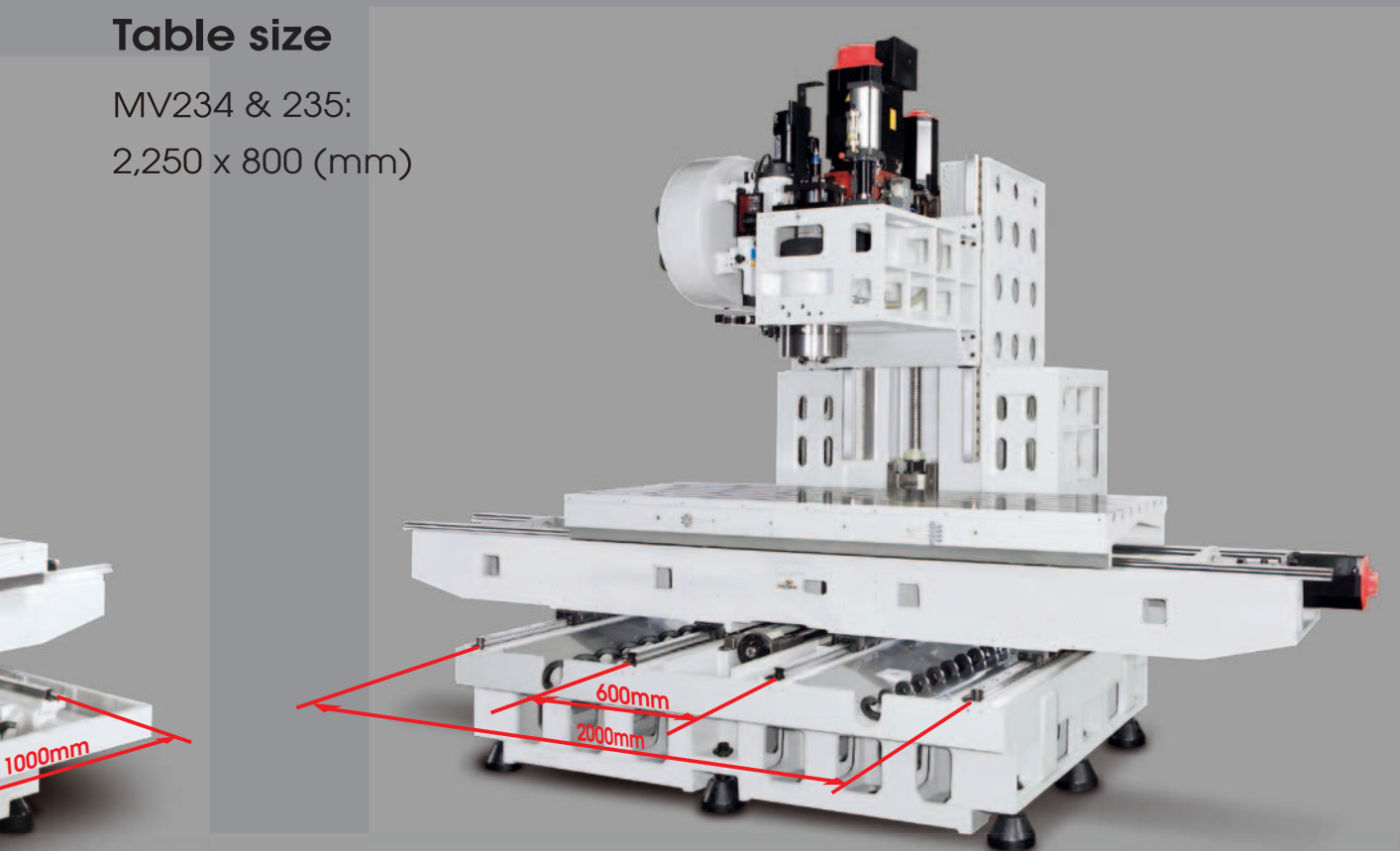
MV235:

2,040 / 800 / 661 (mm)

Table size

MV234 & 235:

2,250 x 800 (mm)



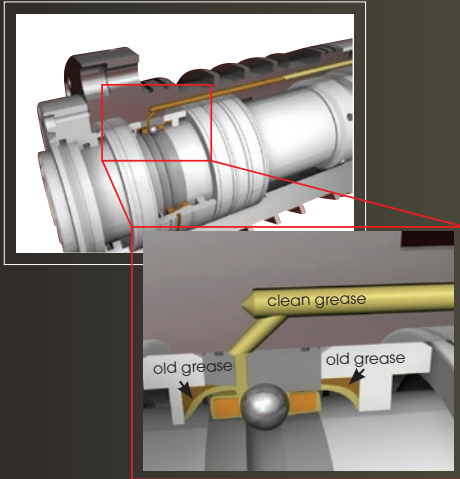
MV234 & MV235



Unique spindle technology

Grease replenishing system

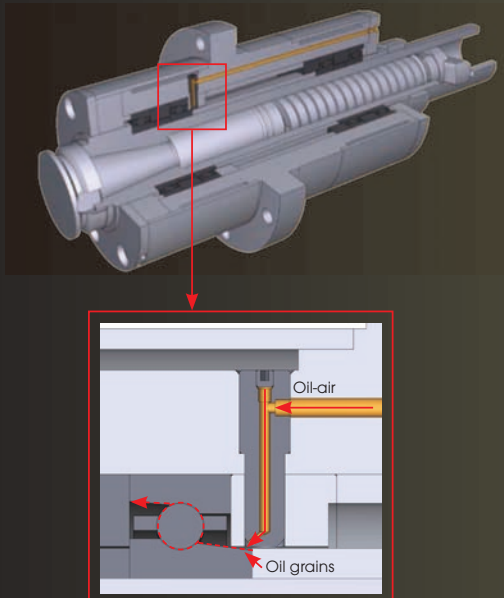
- Use car industry re-greasing principle to supply "clean grease" at 60~100 hr interval by 25~50 mm³ / shoot.



- The grease volume can support 30,000 hr or 3 years.



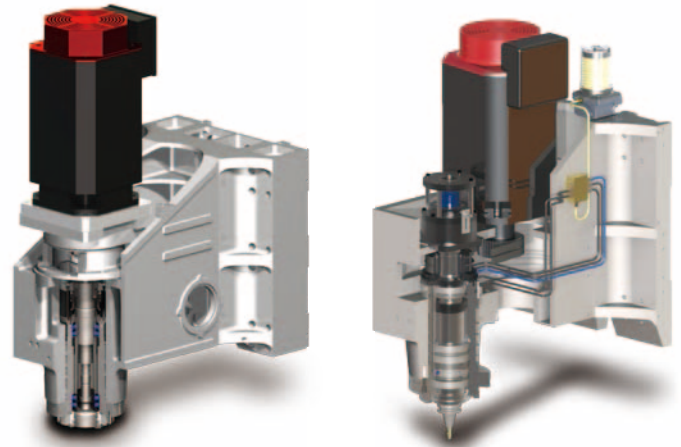
- The lubrication concept illustration of Oil-air



40 Taper

SC-4.1

GB-4.1R



FANUC = ● HEIDENHAIN = ● SIEMENS = ● MITSUBISHI = ●

SPINDLE	SC-4.1	
Max. spindle speed	10,000	12,000
Spindle transmission		
Spindle diameter	Ø70	
Lubrication	Grease packed	
Bearing arrangement	<< >>	
FANUC		
Spindle base speed	-	-
Spindle output kW (S3-25%)	-	-
Spindle output torque Nm (S3-25%)	-	-
HEIDENHAIN		
Spindle base speed	-	-
Spindle output kW (S6-25%)	-	-
Spindle output torque Nm (S6-25%)	-	-
SIEMENS		
Spindle base speed	1,500	1,500 ⁽²⁾
Spindle output kW (S6-25%)	20.9	17.6
Spindle output torque Nm (S6-25%)	133	112
MITSUBISHI		
Spindle base speed	1,500	1,400
Spindle output kW (30min.)	15	18.5
Spindle output torque Nm (30min.)	96	102
40 Taper		
MV204C	● ●	● ●
MV204E	-	-
MV204V	-	-
MV204P / MV214P	-	-
MV234E	-	-
MV234P	-	-
50 Taper		
MV205E / MV215E	-	-
MV205P / MV215P	-	-
MV235E	-	-
MV235P	-	-

Note : ⁽¹⁾(S6-25%) ⁽²⁾(S6-40%)



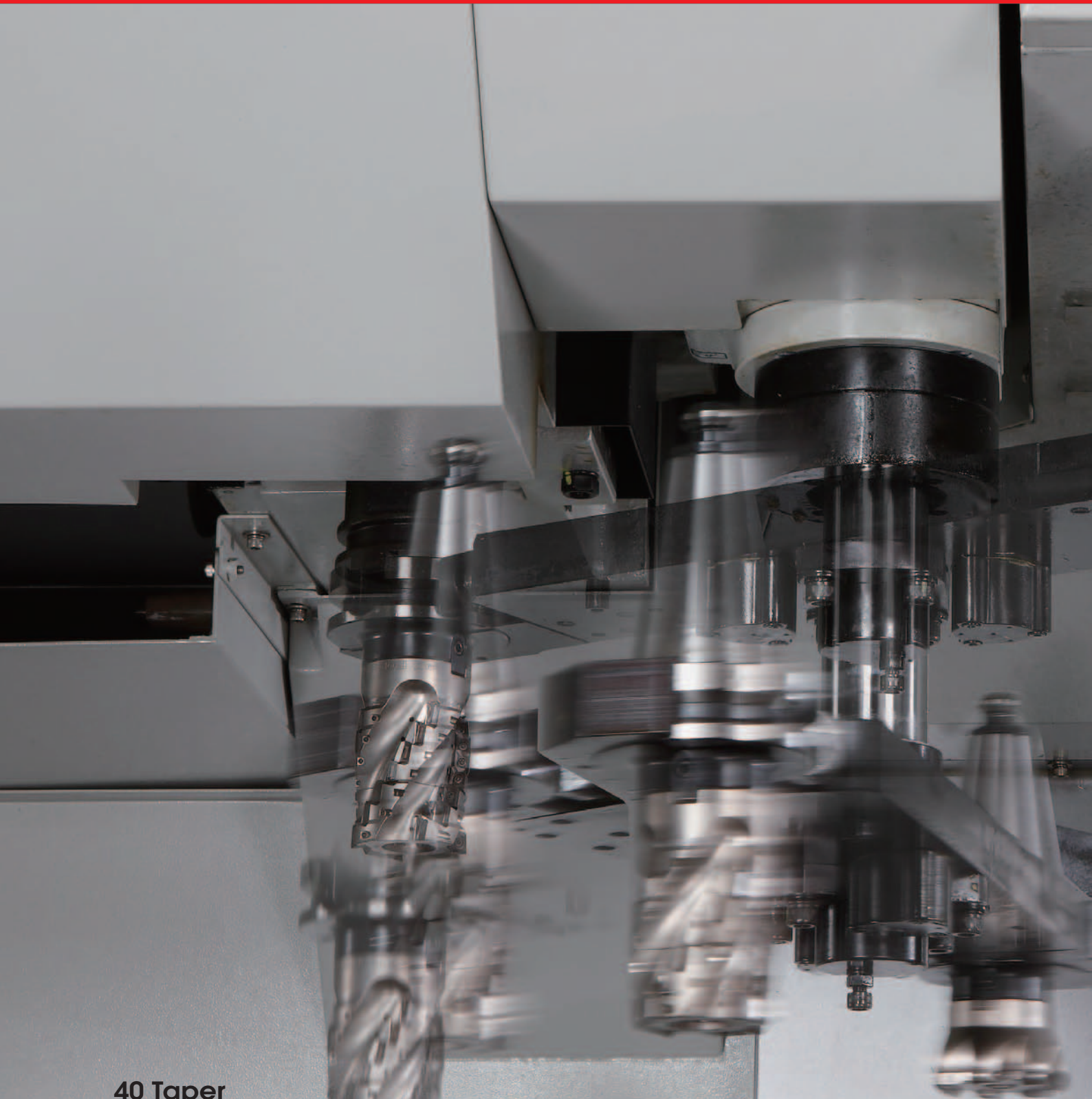
F = FANUC **M** = MITSUBISHI **S** = SIEMENS **T** = HEIDENHAIN

Motor	MV204C		MV204E		MV204V		MV204P & MV214P			
Spindle	10C & 12C	10B	9B	12B	9B	12B	9B	12B	15C	20C
X/Y/Z (kW)	F	-	2.5 / 2.5 / 2.5	3 / 3 / 4	3 / 3 / 4	3 / 3 / 4	4 / 4 / 4			
	T	-	-	-	4.5 / 4.5 / 5.4	4.5 / 4.5 / 5.4	5.1 / 5.1 / 8.6		-	
	S	3.1 / 3.1 / 4.3	-	-	-	-	4.9 / 4.9 / 4.9		-	
	M	2 / 2 / 3	-	-	-	-	-			



Motor	MV205E & MV215E	MV205P & MV215P	MV234E	MV234P				MV235E	MV235P		
Spindle	7.5B	7.5B 15C	9B 12B	9B	12B	15C	20C	6B	7.5B	15C	
X / Y / Z (kW)	F	4 / 4 / 4	4 / 4 / 4	4 / 7 / 7	4 / 7 / 7				4 / 7 / 7		
	T	-	5.1 / 5.1 / 8.6 -	-	8.6 / 8.6 / 8.6			-	-	8.6 / 8.6 / 8.6	-
	S	-	-	-	5.2 / 5.2 / 7.7			-	-	4.9 / 8.2 / 8.2	-
	M	-	-	-	-			-	-	-	-

ATC system



40 Taper



30 ATC



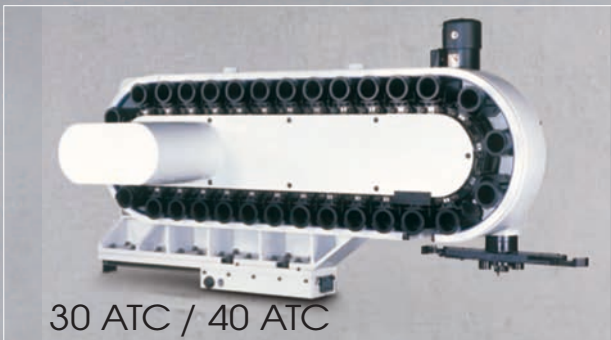
48 ATC



60 ATC



50 Taper

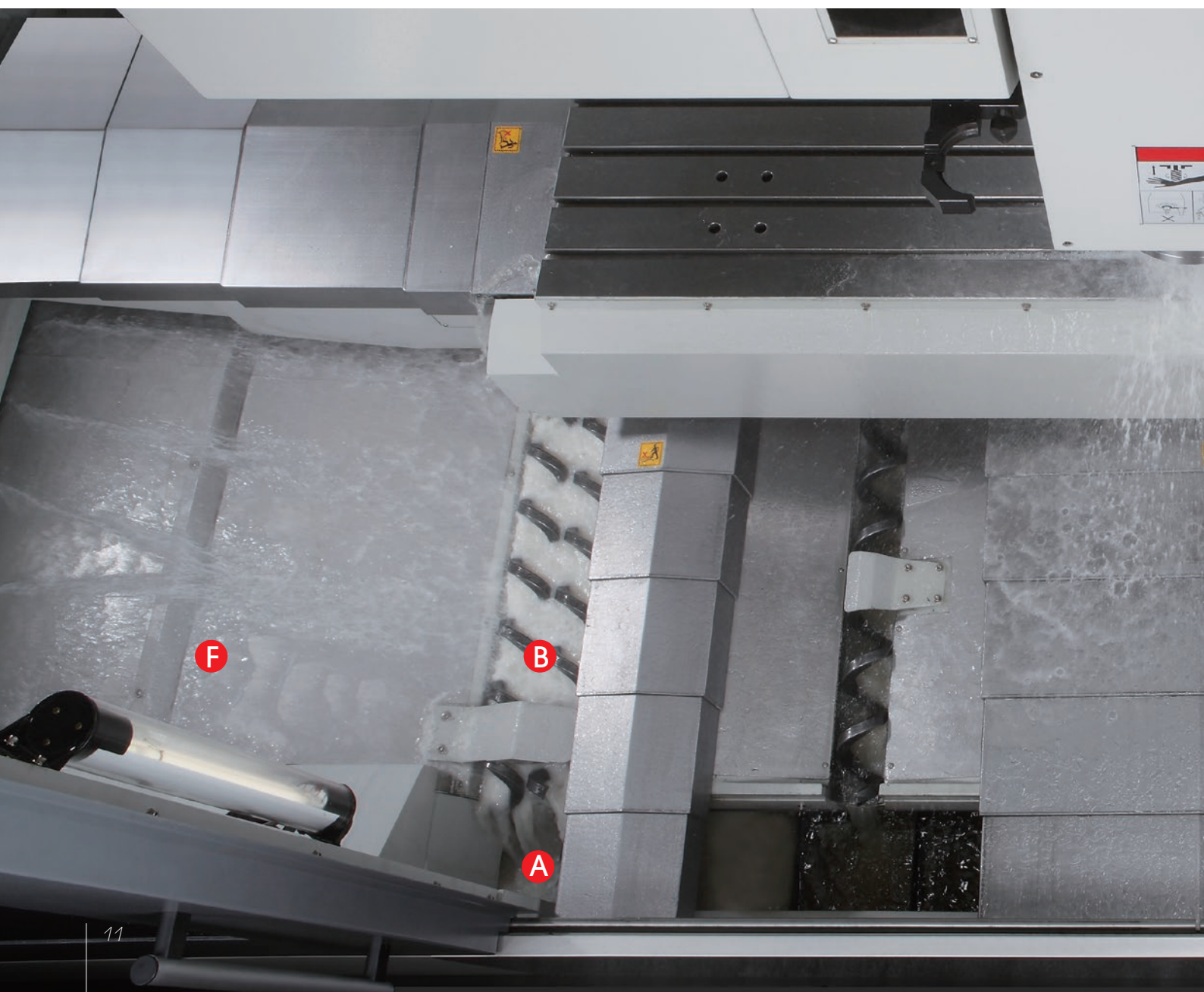


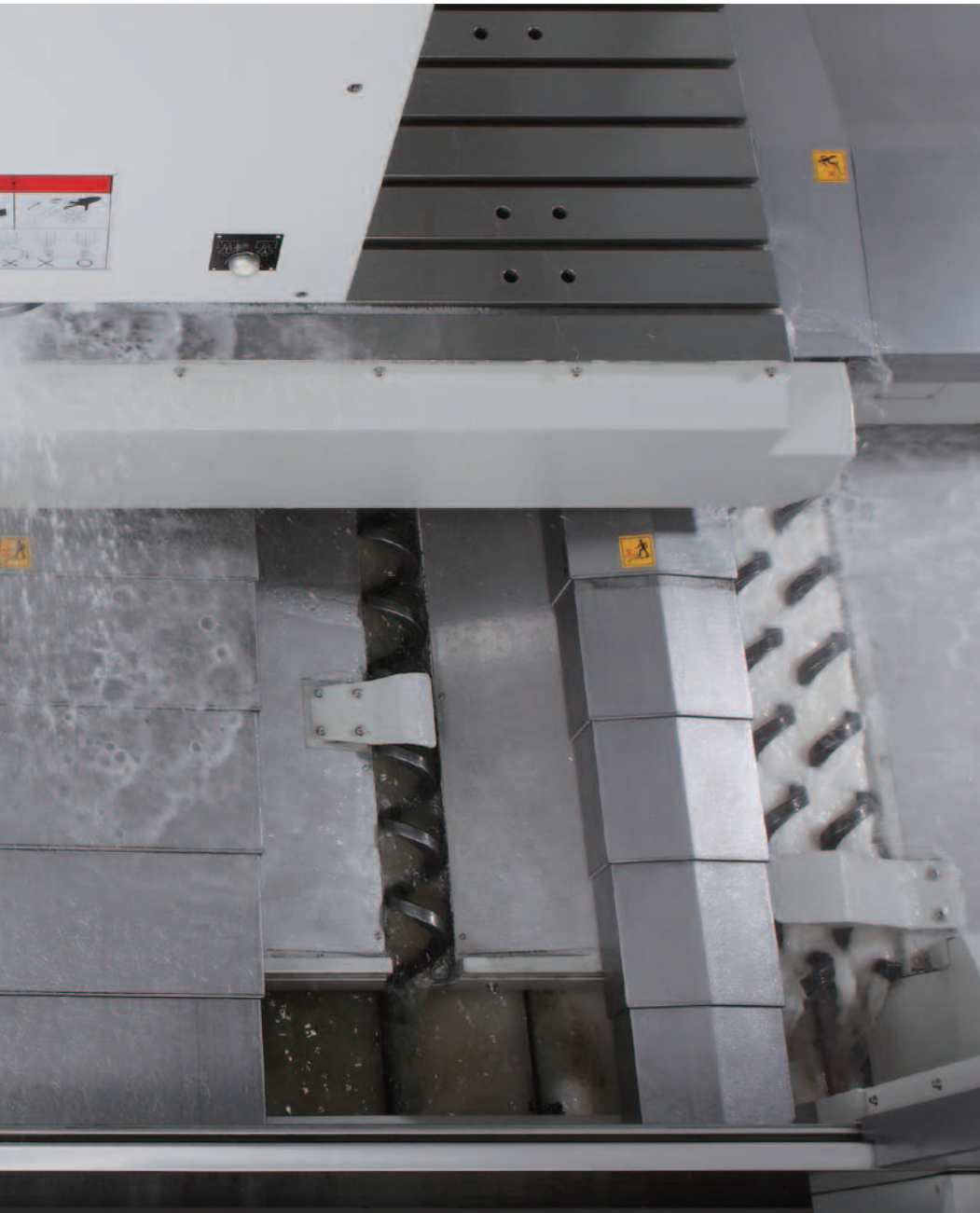
30 ATC / 40 ATC

Coolant system & Chip management

		MV204C	MV204 MV205	MV214 MV215	MV234 MV235
A	Chip slot	4			
B	Augers plus chip conveyor	2			6
C	Wash gun	1		2	2
D	Through spindle coolant*	-	20 Bar		
E	Nozzle coolant	3.5 Bar			
F	Auto flushing on stainless	3.5 Bar	4.5 Bar		
G	Coolant tank	600 L			710 L
H	External chip auger	std.	-		
I	External chip conveyor	opt.	std.		

Note: * MV204C not available.





Easy operation

		MV204 MV205	MV214 MV215	MV234 MV235
A	Max. size when operator door open (mm)	1,400	1,700	2,210
B	Table to front-easy access (mm)	195	195	254 200
C	Table surface to floor* (mm)	1,040	1,040	1,040
D	Easy loading of large workpiece			
E	Hand held remote MPG			
F	Documentation & hand tool shelf			

Note: * MV204C table surface to floor at 970 mm.





A

E

F

F

Technical data	MV204					MV204 MV214			
	C			E / V		P			
Spindle code	10B	10C	12C	9B	12B	9B	12B	15C ⁽²⁾	20C
Work range									
Table size (mm)	1,400 x 700					1,400 x 700 1,700 x 700			
Travel X / Y / Z (mm)	1,270 / 700 / 610 ⁽¹⁾					1,270 / 700 / 610 ⁽¹⁾ 1,524 / 700 / 610 ⁽¹⁾			
Spindle nose to table surface (mm)	150 ~ 760 ⁽¹⁾					150 ~ 760 ⁽¹⁾			
Table load capacity (kg)	1,000					1,800 / 2,000			
Feed drive									
Feed force X / Y / Z (N)	F	10,472 / 10,472 / 10,472	-		6,283 / 6,283 / 11,519	11,519 / 11,519 / 11,519			
	T	-			9,268 / 9,268 / 13,666	11,310 / 11,310 / 19,897			
	M	-	7,173 / 7,173 / 17,671		-	-			
	S	6,283 / 6,283 / 14,137			-	14,137 / 14,137 / 14,137			
Rapid movement X / Y / Z (m/min.)	24 / 24 / 16					36 (F) / 36 (F) 32 (T)			
Acceleration X / Y / Z (m/s ²)	F	3 / 3 / 3	-		3 / 3 / 3	4 / 4 / 4			
	T	-			4 / 3 / 4	5 / 5 / 4 4 / 4 / 4			
	M	-	3 / 3 / 3		-	-			
	S	3 / 3 / 3			-	4 / 4 / 3			
Dia. & pitch of the ball screw	Ø45 / P = 12 / 12 / 8 (M) Ø45 / P = 12 / 12 / 12 (S) (F)			Ø45 / P = 12 / 12 / 12 (F) (T)		Ø45 / P = 12 / 12 / 12 (F) (T) (S)			
Accuracy Positioning / Repeatability									
ISO 230-2						0.008 / 0.004			
JIS 6338 (300mm)						±0.003 / ±0.002			
VDI 3441						0.008 / 0.004			
Main spindle									
Spindle model						40 Taper			
Tool changer									
Tool selection						Random			
Magazine positions	Std.	30			30 / 48				
	Opt.	-			48 / 60		48 & 60 / 60		
Max. tool diameter (mm)						76.2			
Max. tool dia. Due to neighbor pots are empty						125			
Max. tool length (mm)						300			
Max. tool weight (kg)						7			
CTC time-ISO 10791-9 (sec.)-60Hz	5.7 (F)	5 (M)		6		5.5			
	5.5 (S)	5.5 (S)							
Coolant system									
Coolant tank capacity (Liter)						600			
Pump capacity ⁽³⁾									
- Nozzle coolant						60L / min, 3.5 bar			
-Through spindle coolant						25L / min, 20 bar			
- Wash down	60L / min, 3.5 bar					60L / min, 4.5 bar			
Machine size									
Height (mm)	3,280					3,050		3,050	3,280
Floor space W x D (mm)	30 ATC	3,920 x 3,240			3,700 x 3,240		3,700 x 3,240 / -		
	48 ATC	-			3,700 x 3,610		3,700 x 3,610 / 4,520 x 3,710		
	60 ATC	-			3,700 x 3,970		3,700 x 3,970 / 4,520 x 4,070		
Weight (kg)	9,300					9,500 - 10,000		9,500 - 10,100 / 10,100 - 11,000	
Connections									
Main power						220V / 60Hz or 400V / 50Hz			
Power consumption (KVA)	19 (F) 24 (S)	24 (S) 19 (M)	28 (S) 30 (M)	28 (F) 30 (T)		36 (F) 42 (T) 28.6 (S)		33 (F) 42 (T) 31.9 (S)	31 (F)

Note: ⁽¹⁾ For detailed specification of Z axis travel 800mm, please refer to page 22 ~ 24.

⁽²⁾ when MC-4.1 R equipped with option item α L26, its KVA would be 44

⁽³⁾ At 60 Hz.

Standard / Option accessories	MV204					MV204 MV214			
	C			E / V		P			
Spindle code	10B	10C	12C	9B	12B	9B	12B	15C	20C
■ QUASER mill i for MV204E only	○	×	×	○/×	○/×	×	×	×	×
■ FANUC 31iB	×	×	×	×/○	×/○	○	○	○	○
AICC II (Look-ahead 200 blocks)	○	×	×	○/○	○/○	○	○	○	○
FANUC - data server	○	×	×	○	○	○	○	○	○
FANUC - high speed processing (Look-ahead 600 blocks)	×	×	×	×/○	×/○	○	○	○	○
■ HEIDENHAIN TNC640	×	×	×	×/○	×/○	○	○	○	×
HEIDENHAIN advanced function set 2	×	×	×	×/○	×/○	○	○	○	×
■ SIEMENS 828D	○	○	○	×	×	○	○	○	×
■ MITSUBISHI M80	×	○	○	×	×	×	×	×	×
■ MITSUBISHI M830	×	○	○	×	×	×	×	×	×
■ GB-4.1R Belt spindle 9,000 min ⁻¹	×	×	×	●	×	●	×	×	×
■ GB-4.1R Belt spindle 12,000 min ⁻¹	×	×	×	×	●	×	●	×	×
■ GB-4.1 Belt spindle 10,000 min ⁻¹	●	×	×	×	×	×	×	×	×
■ SC-4.1 Coupling spindle 10,000 min ⁻¹	×	●	×	×	×	×	×	×	×
■ SC-4.1 Coupling spindle 12,000 min ⁻¹	×	×	●	×	×	×	×	×	×
■ GC-4.0R / MC-4.1R Coupling spindle 15,000 min ⁻¹	×	×	×	×	×	×	×	●/○	×
■ MC-4.0R Coupling spindle 20,000 min ⁻¹	×	×	×	×	×	×	×	×	●
■ Pull stud for BT tooling	○	○	○	●	●	●	●	●	●
■ Balance tooling for spindle warm up	○	○	○	●	●	●	●	●	●
■ Column raiser (150mm)	○	○	○	○	○	○/×	○/×	○/×	○/×
■ Tall column (one piece column) /Z axis travel 800mm	○	○	○	○	○	○	○	○	○
■ 40 Taper 30 position tool magazine	●	●	●	●	●	●/×	●/×	●/×	●/×
■ 40 Taper 48 position tool magazine	×	×	×	○	○	○/●	○/●	○/●	○/●
■ 40 Taper 60 position tool magazine	×	×	×	○	○	○	○	○	○
■ ATC auto door	×	×	×	○	○	○	○	○	○
■ Linear encoder	×	×	×	○	○	○	○	○	○
■ Remote manual pulse generator	●	●	●	●	●	●	●	●	●
■ Transformer	○	○	○	●	●	●	●	●	●
■ Spindle ECO cooler	●	●	×	●	●	●	●	×	×
■ Spindle oil chiller	○	○	●	○	○	○	○	●	●
■ 4 th axis preparation	×	×	×	●	●	●	●	●	●
■ 20 bar through spindle coolant	○	×	○	●	●	●	●	●	●
■ 50 bar through spindle coolant	×	×	○	○	○	○	○	○	○
■ Coolant wash gun / wash down	●	●	●	●	●	●	●	●	●
■ External chip auger	●	●	●	×	×	×	×	×	×
■ External chip conveyor	○	○	○	●	●	●	●	●	●
■ Cutter air blast	●	●	●	●	●	●	●	●	●
■ Oil-mist collector	○	○	○	○	○	○	○	○	○
■ Work Probe	×	×	×	○	○	○	○	○	○
■ Tool length / breakage measurement	○	○	○	○	○	○	○	○	○
■ Documentation (paper)	○	○	○	○	○	○	○	○	○
■ Foundation bolts & blocks	●	●	●	●	●	●	●	●	●
■ Work light	●	●	●	●	●	●	●	●	●
■ Machine status light	●	●	●	●	●	●	●	●	●
■ CE & EMC */ GB	○	○	○	○	○	○	○	○	○

Note: * Standard for Eu area except C type.

- Machine specification might be different from the catalog if there is any specification update.
- For C series ambient temperature greater than 35°C, the cabinet heat exchanger is required.

Technical data		MV234					
		E		P			
Spindle code		9B	12B	9B	12B	15C ⁽²⁾	20C
Work range							
Table size (mm)		2,250 x 800					
Travel X / Y / Z (mm)		2,040 / 762 / 661 ⁽¹⁾					
Spindle nose to table surface (mm)		150 ~ 811 ⁽¹⁾					
Table load capacity (kg)		2,000					
Feed drive							
Feed force X / Y / Z (N)	F	11,519 / 15,708 / 15,708		11,519 / 15,708 / 15,708			
	T	-		19,897 / 19,897 / 19,897		-	
	S	-		18,849 / 18,849 / 25,133		-	
Rapid movement X / Y / Z (m/min.)		20 / 20 / 16					
Acceleration X / Y / Z (m/s ²)	F	2 / 2 / 2					
	T	-		3 / 3.5 / 3.5		-	
	S	-		3 / 3.5 / 3.5		-	
Dia. & pitch of the ball screw		X = Ø50 / P12 Y,Z = Ø50 / P12					
Accuracy Positioning / Repeatability							
ISO 230-2		0.008 / 0.004					
JIS 6338 (300mm)		±0.003 / ±0.002					
VDI 3441		0.008 / 0.004					
Main spindle							
Spindle model		40 Taper					
Tool changer							
Tool selection		Random					
Magazine positions		48 (std.) 60 (opt.)					
Max. tool diameter (mm)		76.2					
Max. tool dia. Due to neighbor pots are empty		125					
Max. tool length (mm)		300					
Max. tool weight (kg)		7					
CTC time-ISO 10791-9 (sec.)-60Hz		6	5.5 (F) 6.5 (T)			5.5 (F)	
Coolant system							
Coolant tank capacity (Liter)		710					
Pump capacity ⁽³⁾							
- Nozzle coolant		60 L / min, 3.5 bar					
- Through spindle coolant		25 L / min, 20 bar					
- Wash down		60 L / min, 4.5 bar					
Machine size							
Height (mm)		3,150			3,445		
Floor space W x D (mm)	48 ATC	5,745 x 3,700					
	60 ATC	5,745 x 4,100					
Weight (kg)		13,700 (48ATC) 13,800 (60ATC)					
Connections							
Main power		220 V / 60 Hz or 400 V / 50 Hz					
Power consumption (KVA)		38 (F)	44 (F) 46 (T) 43 (S)		40 (F) 46 (T) 35 (S)	38 (F)	

Note: ⁽¹⁾ For detailed specification of Z axis travel 800mm, please refer to page 22 ~ 24.

⁽²⁾ when MC-4.1 R equipped with option item α L26, its KVA would be 48

⁽³⁾ At 60 Hz.

Standard / Option accessories	MV234					
	E		P			
Spindle code	9B	12B	9B	12B	15C	20C
■ QUASER mill I	○	○	×	×	×	×
■ FANUC 31iB	×	×	○	○	○	○
AICC II (Look-ahead 200 blocks)	○	○	○	○	○	○
FANUC - data server	○	○	○	○	○	○
FANUC - high speed processing	×	×	○	○	○	○
■ HEIDENHAIN TNC640	×	×	○	○	○	×
HEIDENHAIN advanced function set 2	×	×	○	○	○	×
■ SIEMENS 828D	×	×	○	○	○	×
■ SIEMENS 840D	×	×	○	○	○	×
■ GB-4.1R belt spindle 9,000 min ⁻¹	●	×	●	×	×	×
■ GB-4.1R belt spindle 12,000 min ⁻¹	×	●	×	●	×	×
■ GC-4.0R / MC-4.1R coupling spindle 15,000 min ⁻¹	×	×	×	×	● / ○	×
■ MC-4.0R Coupling spindle 20,000 min ⁻¹	×	×	×	×	×	○
■ Pull stud for BT tooling	●	●	●	●	●	●
■ Balance tooling for spindle warm up	●	●	●	●	●	●
■ Z axis travel 800mm (column raiser)	○	○	○	○	○	○
■ 40 Taper 48 position tool magazine	●	●	●	●	●	●
■ 40 Taper 60 position tool magazine	○	○	○	○	○	○
■ ATC auto door	○	○	○	○	○	○
■ Linear encoder	○	○	○	○	○	○
■ Remote manual pulse generator	●	●	●	●	●	●
■ Transformer	●	●	●	●	●	●
■ Spindle ECO cooler	●	●	●	●	×	×
■ Spindle oil chiller	○	○	○	○	●	●
■ 4 th axis preparation	●	●	●	●	●	●
■ 20 bar through spindle coolant	●	●	●	●	●	●
■ 50 bar through spindle coolant	○	○	○	○	○	○
■ Coolant wash gun / wash down	●	●	●	●	●	●
■ External chip conveyor	●	●	●	●	●	●
■ Cutter air blast	●	●	●	●	●	●
■ Oil-mist collector	○	○	○	○	○	○
■ Work Probe	○	○	○	○	○	○
■ Tool length / breakage measurement	○	○	○	○	○	○
■ Documentation (paper)	○	○	○	○	○	○
■ Foundation bolts & blocks	●	●	●	●	●	●
■ Work light	●	●	●	●	●	●
■ Machine status light	●	●	●	●	●	●
■ CE & EMC * / GB	○	○	○	○	○	○

Note: * Standard for Eu area.

- Machine specification might be different from the catalog if there is any specification update.

Technical data	MV205 MV215			MV235		
	E	P		E	P	
Spindle code	7.5B	7.5B	15C	6B	7.5B	15C
Work range						
Table size (mm)	1,400 x 700 1,700 x 700			2,250 x 800		
Travel X / Y / Z (mm)	1,270 / 700 / 610 ⁽¹⁾ 1,524 / 700 / 610 ⁽¹⁾			2,040 / 800 / 661 ⁽¹⁾		
Spindle nose to table surface (mm)	190 ~ 800 ⁽¹⁾			150 ~ 811 ⁽¹⁾		
Table load capacity (kg)	1,800 / 2,000			2,000		
Feed drive						
Feed force X / Y / Z (N)	F	11,519 / 11,519 / 11,519		11,519 / 11,519 / 11,519	11,519 / 15,708 / 15,708	11,519 / 15,708 / 15,708
	T	-	11,310 / 11,310 / 19,897	-	-	19,897 / 19,897 / 19,897
	S	-	-	-	-	18,849 / 18,849 / 25,133
Rapid movement X / Y / Z (m/min.)	36			20 / 20 / 16		
Acceleration X / Y / Z (m/s ²)	F	4 / 4 / 2		2 / 2 / 2		
	T	-	5 / 5 / 4 4 / 4 / 4	-	3 / 3.5 / 3.5	
	S	-		-	3 / 3.5 / 3.5	
Dia. & pitch of the ball screw	Ø45 / P = 12 / 12 / 12			X = Ø50 / P12 Y,Z = Ø50 / P12		
Accuracy Positioning / Repeatability						
ISO 230-2				0.008 / 0.004		
JIS 6338 (300mm)				±0.003 / ±0.002		
VDI 3441				0.008 / 0.004		
Main spindle						
Spindle model				50 Taper		
Tool changer						
Tool selection				Random		
Magazine positions				30 (std.) 40 (opt.)		
Max. tool diameter (mm)				125		
Max. tool dia. Due to neighbor pots are empty				200		
Max. tool length (mm)				350		
Max. tool weight (kg)				15		
CTC time-ISO 10791-9 (sec.)-60Hz	9			10		
Coolant system						
Coolant tank capacity (Liter)	600			710		
Pump capacity ⁽²⁾						
- Nozzle coolant				60 L / min, 3.5 bar		
-Through spindle coolant				25 L / min, 20 bar		
- Wash down				60 L / min, 4.5 bar		
Machine size						
Height (mm)	3,400		3,325	3,220		3,395
	3,470		3,390			
Floor space W x D (mm)	30 ATC	3,700 x 3,760 / 4,520 x 3,860		5,745 x 3,880		
	40 ATC	3,700 x 4,360 / 4,520 x 4,460		5,745 x 4,500		
Weight (kg)	10,000 - 10,600 / 11,000 - 12,000			14,000 (30 ATC) 14,500 (40 ATC)		
Connections						
Main power				220 V / 60 Hz or 400 V / 50 Hz		
Power consumption (KVA)	40 (F)	40 (F) 42 (T)	45 (F)	44 (F)	44 (F) 46 (T) 43 (S)	49 (F)

Note: ⁽¹⁾ For detailed specification of Z axis travel 800mm, please refer to page 22 ~ 24.

⁽²⁾ At 60 Hz.

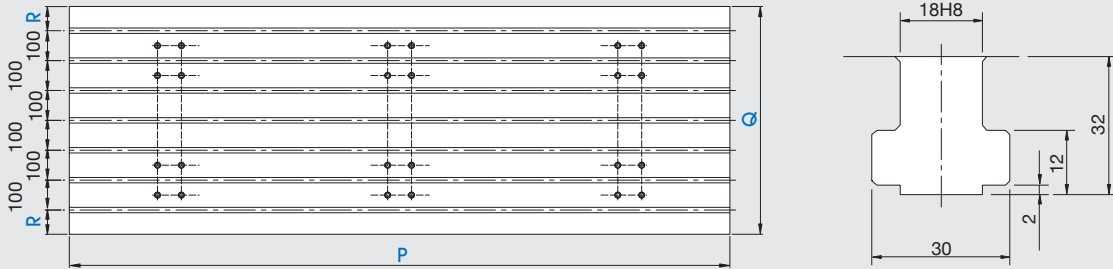
Standard / Option accessories	MV205 MV215			MV235		
	E	P		E	P	
Spindle code	7.5B	7.5B	15C	6B	7.5B	15C
■ QUASER mill I	○	×		○	×	
■ FANUC 31iB	×	○		×	○	
AICC II (Look-ahead 200 blocks)	○	○		○	○	
FANUC - data server	○	○		○	○	
FANUC - high speed processing	×	○		×	○	
■ HEIDENHAIN TNC640	×	○	×	×	○	×
HEIDENHAIN advanced function set 2	×	○	×	×	○	×
■ SIEMENS 828D	×	×		×	○	×
■ SIEMENS 840D	×	×		×	○	×
■ GB-5.0R belt spindle 6,000 min ⁻¹	×	×		●	×	
■ GB-5.0R belt spindle 7,500 min ⁻¹ + Gear box	●	●	×	○	●	×
■ MC-5.0A coupling spindle 15,000 min ⁻¹	×	×	●	×	×	●
■ Pull stud for BT tooling	●	●		●	●	
■ Balance tooling for spindle warm up	●	●		●	●	
■ Tall column (one piece column) /Z axis travel 800mm	○	○		×	×	
■ Z axis travel 800mm (column raiser)	×	×		○	○	
■ 50 Taper 30 position tool magazine	●	●		●	●	
■ 50 Taper 40 position tool magazine	○	○		○	○	
■ ATC auto door	○	○		○	○	
■ Linear encoder	○	○		○	○	
■ Remote manual pulse generator	●	●		●	●	
■ Transformer	●	●		●	●	
■ Spindle ECO cooler	×	×		●	×	
■ Spindle oil chiller	●	●		○	●	
■ 4 th axis preparation	●	●		●	●	
■ 20 bar through spindle coolant	●	●		●	●	
■ 50 bar through spindle coolant	○	○		○	○	
■ Coolant wash gun / wash down	●	●		●	●	
■ External chip conveyor	●	●		●	●	
■ Cutter air blast	●	●		●	●	
■ Oil-mist collector	○	○		○	○	
■ Work Probe	○	○		○	○	
■ Tool length / breakage measurement	○	○		○	○	
■ Documentation (paper)	○	○		○	○	
■ Foundation bolts & blocks	●	●		●	●	
■ Work light	●	●		●	●	
■ Machine status light	●	●		●	●	
■ CE & EMC * / GB	○	○		○	○	

Note: * Standard for Eu area.

- Machine specification might be different from the catalog if there is any specification update.

Table dimension

	MV204C	MV204/205	MV214/215	MV234/235
P	1,400	1,400	1,700	2,210
Q	700	700	700	762
R	100	100	100	81
T-Slots No.	6	6	6	7



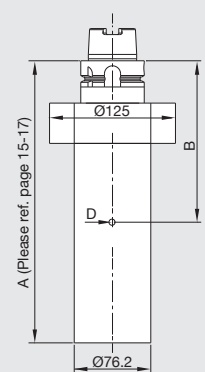
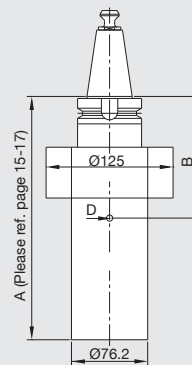
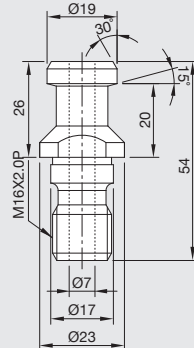
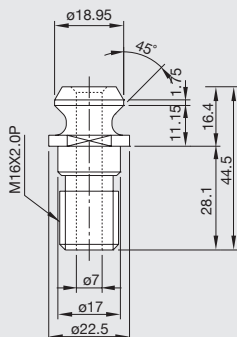
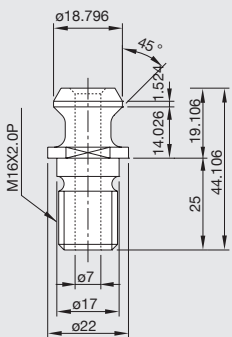
Pull stud and applicable tools ISO-40

B	tool median point distance	tool middle point distance
D	tool weight	tool weight
MOMENT=D*B(≤ 10.29N-m)		MOMENT=D*B(≤ 9.85N-m)

BT 40

ISO (7388-B)

DIN (69872-A)



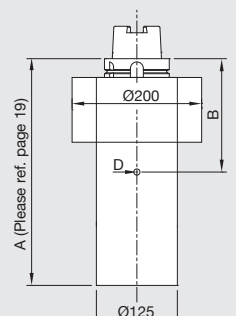
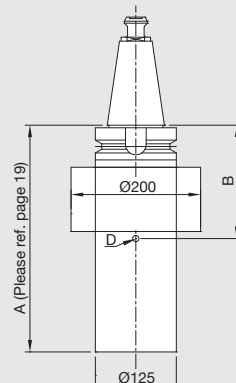
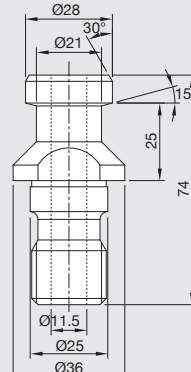
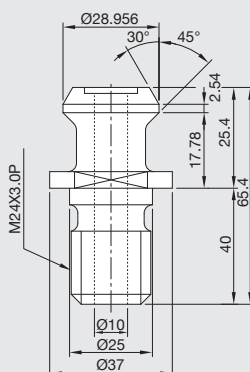
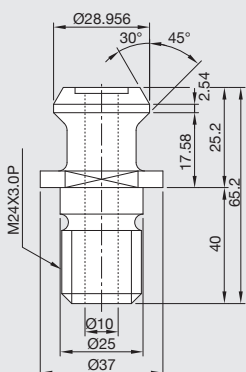
Pull stud and applicable tools ISO-50

B	tool median point distance
D	tool weight
MOMENT=D*B(≤ 25.72N-m)	

BT 50

ISO (7388-B)

DIN (69872-A)

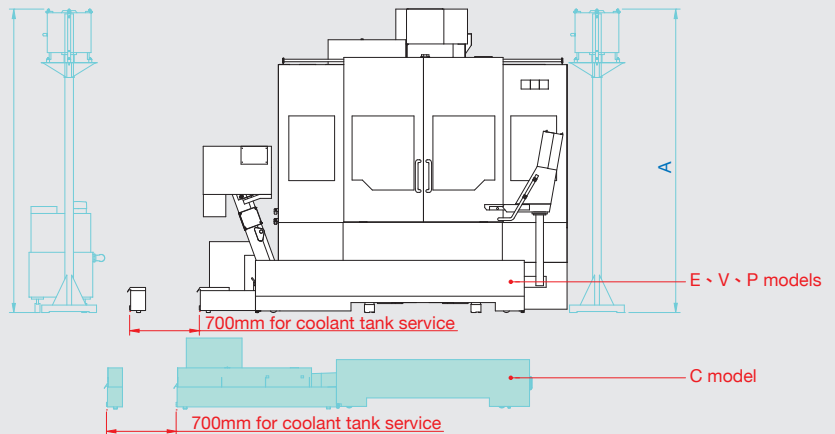
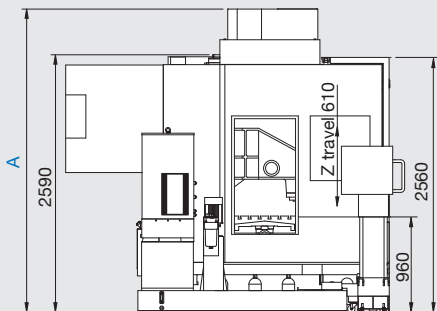
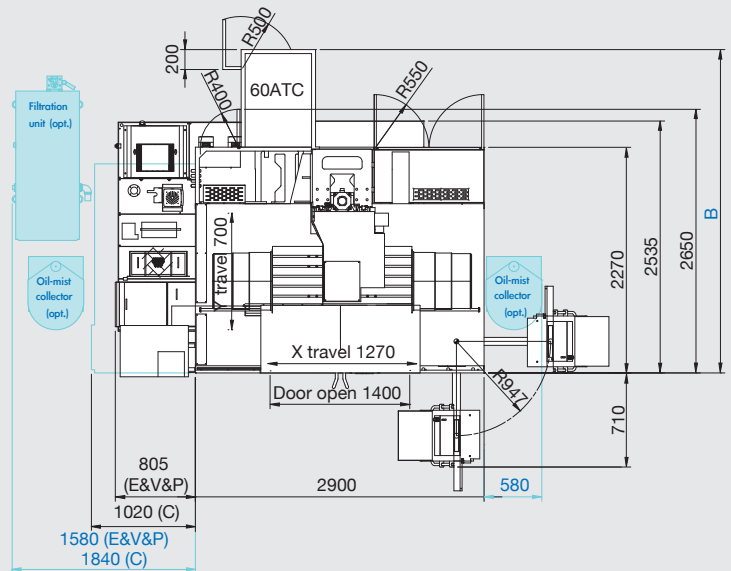


MV204 / 205 Layout

Max. Machine Height	MV204			MV205		
	C		E & V & P	P	E & P	P
Spindle code	10C / 12C	10B	9B / 12B	15C / 20C	7.5B	15C
A Standard column 1. Z axis travel 610 mm 2. Spindle nose to table surface 150~760 mm (#40) 190~800mm (#50)	3,280		3,050	3,280	3,400	3,325
A Column raiser (150mm) 1. Z axis travel 610 mm 2. Spindle nose to table surface 300~910 mm (#40) 340~950mm (#50)	3,430		3,200	3,430	-	-
A Tall column (one piece column) 1. Z axis travel 800 mm 2. Spindle nose to table surface 150~950 mm (#40) 190~990mm (#50)	3,470		3,240	3,470	3,600*	3,525*

*Container shipment is not possible

MV204	B	40 Taper	30 ATC	2,530
			48 ATC	2,900
			60 ATC	3,260
MV205		50 Taper	30 ATC	3,050
			40 ATC	3,650



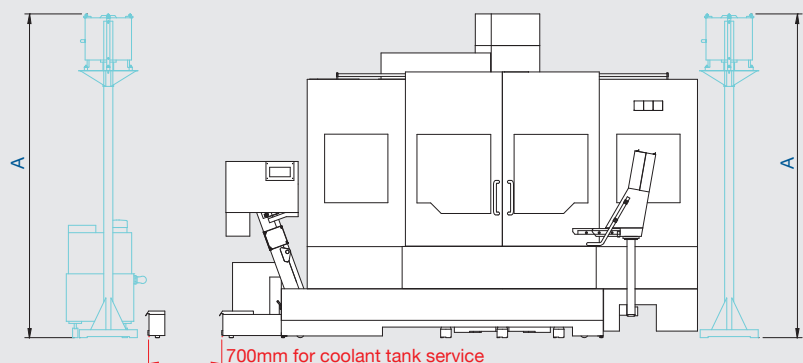
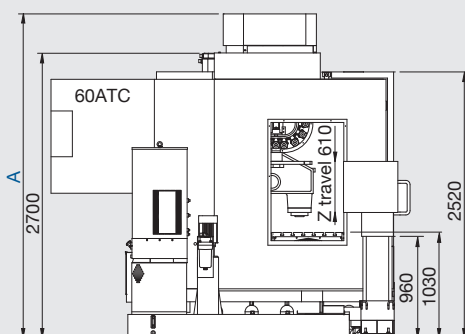
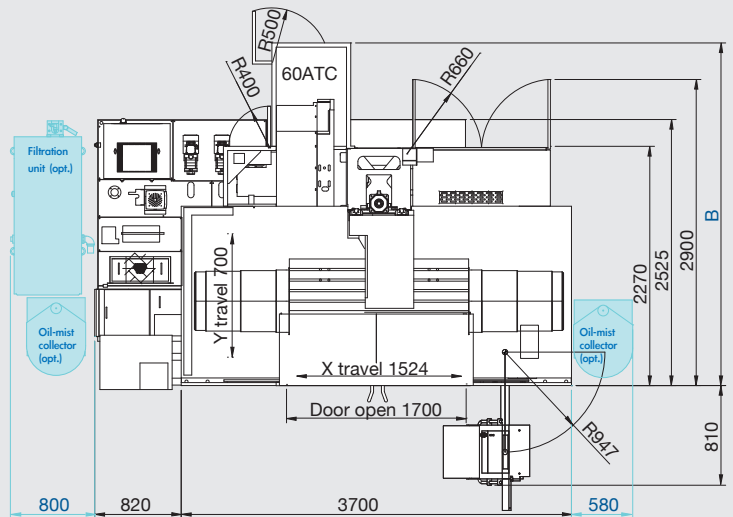
MV214 & MV215 Layout

Installation dimension

Max. Machine Height	MV214		MV215	
	P		E & P	P
Spindle code	9B / 12B	15C / 20C	7.5B	15C
A Standard column 1. Z axis travel 610 mm 2. Spindle nose to table surface 150~760 mm (#40) 190~800mm (#50)	3,200	3,350	3,470	3,390
A Tall column (one piece column) 1. Z axis travel 800 mm 2. Spindle nose to table surface 150~950 mm (#40) 190~990mm (#50)	3,390*	3,540*	3,670*	3,590*

*Container shipment is not possible

MV214	B	40 Taper	48 ATC	2,900
			60 ATC	3,260
MV215		50 Taper	30 ATC	3,050
			40 ATC	3,650



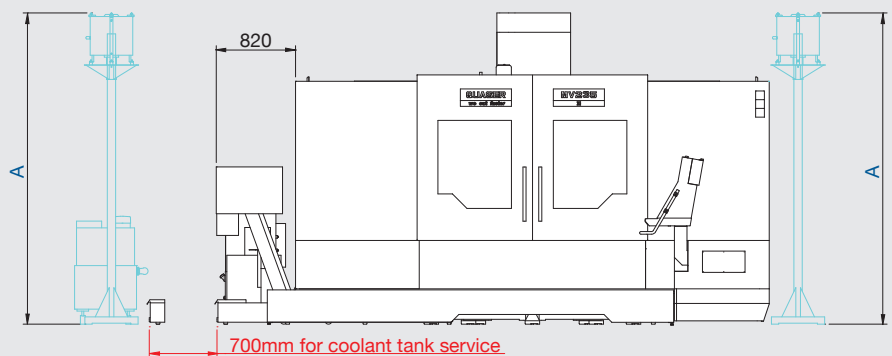
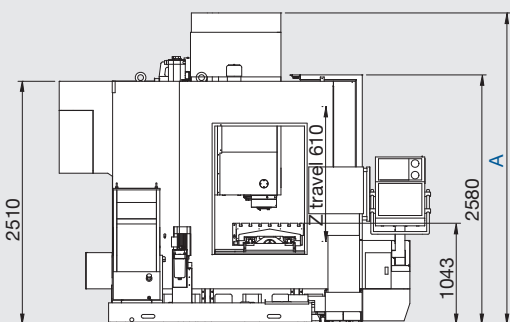
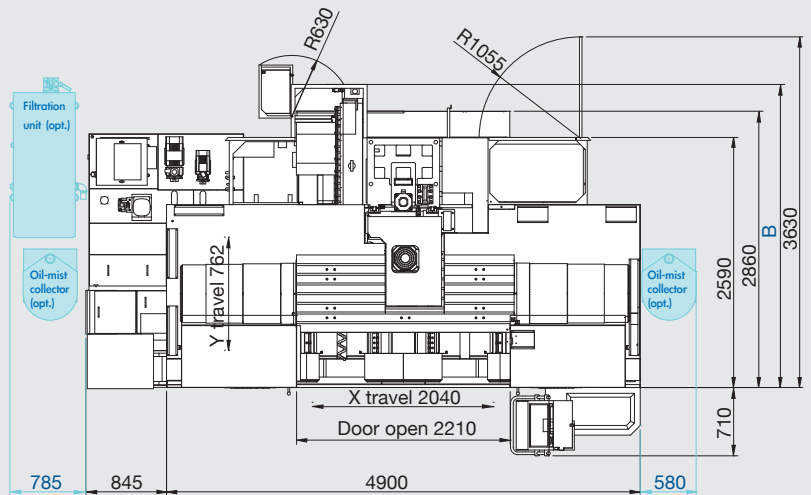
MV234 / 235 Layout

Installation dimension

Max. Machine Height	MV234		MV235	
	E & P	P	E & P	P
Spindle code	9B / 12B	15C / 20C	6B / 7.5B	15C
A Standard column 1. Z axis travel 661 mm 2. Spindle nose to table surface 150~811 mm (#40 & #50)	3,150	3,445	3,220	3,395
A Tall column (column raiser) 1. Z axis travel 800 mm 2. Spindle nose to table surface 150~950 mm (#40 & #50)	3,290*	3,590*	3,410*	3,540*

* Container shipment is not possible

MV234	B	40 Taper	48 ATC	2,990
			60 ATC	3,390
MV235		50 Taper	30 ATC	3,170
			40 ATC	3,790



We build machines in a hybrid way

- Very classic craftsmanship combined with most advanced modern equipments in a clean environment...

QUASER MACHINE TOOLS, INC.

Address: No. 3, Gong 6th Rd., Youshih
Industrial Park, Dajia Dist,
Taichung City 437, Taiwan
Tel: +886 4 26821277
Fax: +886 4 26822045
E-mail: sales@qmt.com.tw
Web: www.quaser.com



QUASER EUROPE TECHNIC CENTER - SWITZERLAND

Address: Unterlettenstrasse 16 Postfach
162 CH-9443 Widnau
Switzerland
Tel: +41 71 722 43 43
Fax: +41 71 722 43 08
Mobile phone: +41798229028



KUNSHAN QUASER MACHINE TOOLS, INC.

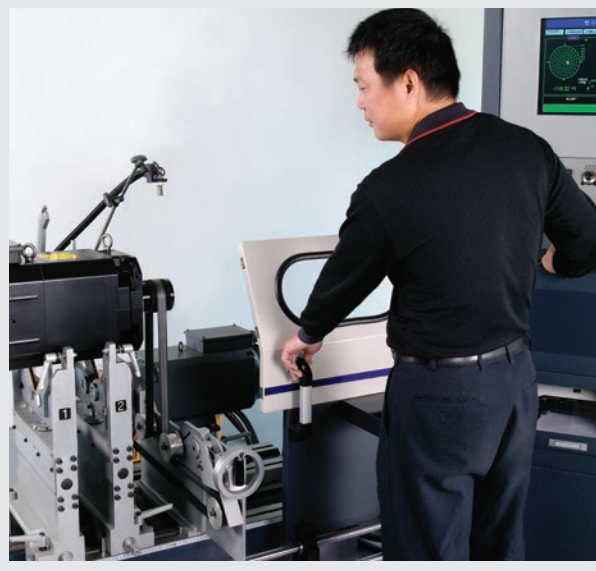
Address: (B) No. 287, Kangzhuang Road,
Zhoushi Town, Kunshan City,
Jiangsu, P.R. China
Tel: 0512-82627139
Fax: 0512-82627138



QUASER AMERICA MACHINE TOOLS INC.

Address: 3049 Southcross Boulevard, Rock Hill,
SC, 29730, UNITED STATES
Tel: +1 803-324-7123
Fax: +1 888-459-8175
E-mail: startins@qmt.com.tw







**QUASER MACHINE TOOLS,
INC.**

Address: No. 3, Gong 6th Rd.,
Youshih Industrial
Park, Dajia Dist,
Taichung City 437,
Taiwan
Tel: +886 4 26821277
Fax: +886 4 26822045
E-mail: sales@qmt.com.tw
Web: www.quaser.com

**QUASER EUROPE TECHNIC
CENTER - SWITZERLAND**

Address: Unterlettenstrasse 16
Postfach 162 CH-9443
Widnau Switzerland
Tel: +41 71 722 43 43
Fax: +41 71 722 43 08
Mobile phone: +41798229028

**KUNSHAN QUASER
MACHINE TOOLS, INC.**

Address: (B) No. 287,
Kangzhuang Road,
Zhoushi Town,
Kunshan City,
Jiangsu,P.R. China
Tel: 0512-82627139
Fax: 0512-82627138

**QUASER AMERICA MACHINE
TOOLS INC.**

Address: 3049 Southcross
Boulevard,Rock Hill,
SC, 29730, UNITED STATES
Tel: +1 803-324-7123
Fax: +1 888-459-8175
E-mail: startins@qmt.com.tw

Fold here for filing!